

Avrella

User Guide

Table of Contents

[Introduction](#)

[Welcome to Avrella](#)

[System Requirements](#)

[Overview](#)

[License Agreement](#)

[Uninstall](#)

[Donations](#)

[Menus](#)

[Menu descriptions](#)

[Palettes](#)

[Show Palettes](#)

[How To](#)

[Create Custom Notation Fonts](#)

[Editing notation, symbols, text etc.](#)

[Lyrics - insertion and presentation](#)

[Navigating around the score](#)

[Score Presentation](#)

[Troubleshooting](#)

[Tips file not found.](#)

[How to get further help](#)

[Glossary of Terms](#)

[Glossary of musical terms](#)

[Technical](#)

Introduction

Date published: Friday 12th December 2025.

[Giltrex Ltd.](#), London UK.

In This Section

[Welcome to Avrella](#)

[System Requirements](#)

[Overview](#)

[License Agreement](#)

[Uninstall](#)

[Donations](#)

Welcome to Avrella

Avrella - music score editor.

Trust that you enjoy using this program, and that it meets your requirements. All feedback both positive and negative on this program is welcome.

[Giltrex Ltd.](#)

[email contact](#)

System Requirements

IBM PC or compatible.

Sound Blaster or compatible Sound card.

Operating Systems: Windows 10 /11

Preferred minimum Screen resolution: 1024 x 768.

To change the Windows screen resolution:

Windows 10 / 11

1. On the Windows Desktop, click the right mouse button to launch the Pop-Up menu and select Display Settings..
2. Scroll down to Display resolution to set to the resolution you wish.

Overview

The program has been designed with the intention of allowing the musician to easily create and maintain scores with the minimum of hassle.

Features include:

Straightforward insertion of notation.

Drag notation / text into place.

Insert / edit lyrics on screen.

Guitar notation - chords symbols, bends, vibrato etc.

Supports Tablature.

Support of user designed fonts for notation. - including user specific symbols.

Property dialog - facilitating editing.

Up to 32 staves per score*

Import / Export MIDI files.

Online Help.

Plus many more features. It is recommended that you start by working your way through the tutorial which will give you a basic idea of how to use the program. It is well worth the 30 minutes or so that it'll take you. In time of course you will find many useful features, but for now our intent is just to get you easily started.

Finally if it's not there and you think it ought to be, then [email support](#) by all means, whether it be to inform us of a feature for which you consider the user interface is not straightforward or if there is a feature which you would like to see included. Note: Because of the huge

increase in spam, please put the product name: "Avrella" in the subject header to ensure that your email does not accidentally get marked as spam.

* 32 staves per score was just a logical limit put in. This can certainly be increased. Email if you find this limit is insufficient.

License Agreement

Freeware Licence Agreement

This licence agreement only applies to the free version of Avrella software. "Software" is defined as the Avrella software program, which includes software components installed by the setup program. By installing, copying, or otherwise using this Software, you agree to be bound by the terms of this License Agreement. If you do not agree to the terms of this License Agreement, you must immediately terminate your use of this Software and you must delete it completely from your computer system, such as by using the Uninstall option included in the Windows folder that is installed for Avrella.

Terms and Conditions

BY DOWNLOADING, INSTALLING, USING, TRANSMITTING, DISTRIBUTING OR COPYING THIS SOFTWARE ("THE SOFTWARE"), YOU AGREE TO THE TERMS OF THIS AGREEMENT (INCLUDING THE SOFTWARE LICENCE AND DISCLAIMER OF WARRANTY) WITH GILTREX LTD THE OWNER OF ALL RIGHTS IN RESPECT OF THE SOFTWARE.

Please read this document carefully before using the software.

IF YOU DO NOT AGREE TO ANY OF THE TERMS OF THIS LICENCE THEN DO NOT DOWNLOAD, INSTALL, USE, TRANSMIT, DISTRIBUTE OR COPY THE SOFTWARE.

THIS DOCUMENT CONSTITUTES A LICENCE TO USE THE SOFTWARE ON THE TERMS AND CONDITIONS APPEARING BELOW.

The Software is licensed to you without charge for use only upon the terms of this licence, and Giltrex Ltd. reserves all rights not expressly granted to you. Giltrex Ltd. retains ownership of all copies of the Software.

1. Licence

You may use the Software without charge.

You may distribute exact copies of the Software to anyone.

2. Restrictions

Giltrex Ltd. reserves the right to revoke the above distribution right at any time, for any or no reason.

YOU MAY NOT MODIFY, ADAPT, TRANSLATE, RENT, LEASE, LOAN, SELL, ONSSELL, REQUEST DONATIONS OR CREATE DERIVATE WORKS BASED UPON THE SOFTWARE OR ANY PART THEREOF.

The Software may contain trade secrets/source code and to protect them you may not decompile, reverse engineer, disassemble or otherwise reduce the Software to a humanly perceivable form. You agree not to divulge, directly or indirectly, until such trade secrets/source code cease to be confidential, for any reason not your own fault.

3. Termination

This licence is effective until terminated. The Licence will terminate automatically without notice from Giltrex Ltd. if you fail to comply with any provision of this Licence. Upon termination you must destroy the Software and all copies thereof. You may terminate this Licence at any time by destroying the Software and all copies thereof. Upon termination of this licence for any reason you shall continue to be bound by the provisions of Section 2 above. Termination will be without prejudice to any rights Giltrex Ltd. may have as a result of this agreement.

4. Disclaimer of Warranty, Limitation of Remedies

TO THE FULL EXTENT PERMITTED BY LAW, GILTREX LTD HEREBY EXCLUDES ALL CONDITIONS AND WARRANTIES, WHETHER IMPOSED BY STATUTE OR BY OPERATION OF LAW OR OTHERWISE, NOT EXPRESSLY SET OUT HEREIN. THE SOFTWARE, AND ALL ACCOMPANYING FILES, DATA AND MATERIALS ARE DISTRIBUTED "AS IS" AND WITH NO WARRANTIES OF ANY KIND, WHETHER EXPRESS OR IMPLIED. GILTREX LTD DOES NOT WARRANT, GUARANTEE OR MAKE ANY REPRESENTATIONS REGARDING THE USE, OR THE RESULTS OF THE USE, OF THE SOFTWARE WITH RESPECT TO ITS CORRECTNESS, ACCURACY, RELIABILITY, CURRENTNESS OR OTHERWISE. THE ENTIRE RISK OF USING THE SOFTWARE IS ASSUMED BY YOU. GILTREX LTD MAKES NO EXPRESS OR IMPLIED WARRANTIES OR CONDITIONS INCLUDING, WITHOUT LIMITATION, THE WARRANTIES OF MERCHANTABILITY OR FITNESS FOR A PARTICULAR PURPOSE WITH RESPECT TO THE SOFTWARE. NO ORAL OR WRITTEN INFORMATION OR ADVICE GIVEN BY GILTREX LTD, IT'S DISTRIBUTORS, AGENTS OR EMPLOYEES SHALL CREATE A WARRANTY, AND YOU MAY NOT RELY ON ANY SUCH INFORMATION OR ADVICE.

IMPORTANT NOTE: Nothing in this Agreement is intended or shall be construed as excluding or modifying any statutory rights, warranties or conditions which by virtue of any national or state Fair Trading, Trade Practices or other such consumer legislation may not be modified or excluded. If permitted by such legislation, however, Giltrex Ltd. liability for any breach of any such warranty or condition shall be and is hereby limited to the supply of the Software licensed hereunder again as Giltrex Ltd at its sole discretion may determine to be necessary to correct the said breach.

IN NO EVENT SHALL GILTREX LTD BE LIABLE FOR ANY SPECIAL, INCIDENTAL, INDIRECT OR CONSEQUENTIAL DAMAGES (INCLUDING, WITHOUT LIMITATION, DAMAGES FOR LOSS OF BUSINESS PROFITS, BUSINESS INTERRUPTION, AND THE LOSS OF BUSINESS INFORMATION OR COMPUTER PROGRAMS), EVEN IF GILTREX LTD OR ANY GILTREX LTD REPRESENTATIVE HAS BEEN ADVISED OF THE POSSIBILITY OF SUCH DAMAGES. IN ADDITION, IN NO EVENT DOES GILTREX LTD AUTHORISE YOU TO USE THE SOFTWARE IN SITUATIONS WHERE FAILURE OF THE SOFTWARE TO PERFORM CAN REASONABLY BE EXPECTED TO RESULT IN A PHYSICAL INJURY, OR IN LOSS OF LIFE. ANY SUCH USE BY YOU IS ENTIRELY AT YOUR OWN RISK, AND YOU AGREE TO HOLD GILTREX LTD HARMLESS FROM ANY CLAIMS OR LOSSES RELATING TO SUCH UNAUTHORIZED USE.

5. General

All rights of any kind in the Software which are not expressly granted in this Agreement are entirely and exclusively reserved to and by Giltrex Ltd.

This Agreement shall be governed by the laws of the United Kingdom. Exclusive jurisdiction and venue for all matters relating to this Agreement shall be in courts and fora located in the United Kingdom, and you consent to such jurisdiction and venue. This agreement contains the entire Agreement between the parties hereto with respect to the subject matter hereof, and supersedes all prior agreements and/or understandings (oral or written). Failure or delay by Giltrex Ltd. in enforcing any right or provision hereof shall not be deemed a waiver of such provision or right with respect to the instant or any subsequent breach. If any provision of this Agreement shall be held by a court of competent jurisdiction to be contrary to law, that provision will be enforced to the maximum extent permissible, and the remaining provisions of this Agreement will remain in force and effect.

Sound Blaster AWE32 and Sound Blaster 16 are trademarks of Creative Technology Ltd. Dell is a registered trademark of Dell Computer Corporation. Avrella is a trademark of

Giltrex Ltd. Intel, Pentium are registered trademarks of Intel Corporation. IBM and AT are registered trademarks and PC/XT are trademarks of International Business Machines Corporation. Microsoft, MS, MS-DOS are registered trademarks and Windows, Win32, Windows NT and Windows 10 and 11 are trademarks of Microsoft Corporation. Firefox is a trademark of The Mozilla Organization. Netscape Communicator is a trademark of Netscape Communications Corporation. Java is a registered trademark of Sun Microsystems. All other products are registered trademarks or trademarks of their respective owners.

Uninstall

As part of the installation setup, an uninstall icon is added to the Avrella folder. Run this to remove Avrella from your system. (You may also uninstall via Control Panel -> Add or Remove Programs.)

Donations

Any donations however small towards helping the maintenance and further development of this software program are greatly appreciated.

[Click here to donate](#) (or the donate link in the Help About Dialog).

Menus

In This Section

[Menu descriptions](#)

[File menu](#)

[Edit menu](#)

[View menu](#)

[Insert menu](#)

[Format menu](#)

[Tools menu](#)

[Score menu](#)

[Window menu](#)

[Help menu](#)

Menu descriptions

File menu

Edit menu

View menu

Insert menu

Format menu

Tools menu

Score menu

Window menu

Help menu

Palettes

In This Section

[Guitar Palette command \(Window menu\)](#)

[Standard Palette command \(Window menu\)](#)

[Show Palettes](#)

[Supplementary Palette command \(Window menu\)](#)

Show Palettes

Use these commands to display and hide Guitar, Standard and Supplementary Palettes.

[Window Guitar Palette command](#) to display and hide the [Guitar Palette](#).

[Window Standard Palette command](#) to display and hide the [Standard Palette](#).

[Window Supplementary Palette command](#) to display and hide the [Supplementary Palette](#).

How To

In This Section

[Create Custom Notation Fonts](#)

[Editing notation, symbols, text etc.](#)

[Lyrics - insertion and presentation](#)

[Navigating around the score](#)

[Score Presentation](#)

Create Custom Notation Fonts

The notation in Avrella is drawn by selecting a specially designed notation font that has been created and matched specifically for this program. The two fonts supplied with the program are Avrella Standard Type 1 and Avrella Freestyle Type 1.

To create your own custom Font notation - or even if you just want to improve on the supplied fonts you will require a [software package](#) designed to create fonts such as [Fontographer](#) or [Softy](#).

Guidelines for creating your own font

Copy one of the standard supplied fonts either Avrella Standard Type 1 or Avrella Freestyle Type 1 to the name of your new font file - e.g. From a command prompt box:

```
C:\MyDevelopmentFontDirectory> copy AvrellaStdType1.ttf avrmyfont.ttf
```

(Copies of the Avrella font files are located in the res\Fonts subdirectory to the Avrella program installation - e.g. "C:\Program Files\Avrella\res\Fonts" if Avrella was installed in "C:\Program Files\Avrella".)

Modify the glyphs as desired - ensuring that the actual scale size of the glyph is not altered - altering the scale size will have dire effects on how your new font will size verses staff lines etc. when loaded. For example if modifying a glyph for which the size is 1200 X 3000 it is important to ensure that the overall size is not changed, plus that the horizontal mid line and vertical line positions are not changed. Given this you are free to alter the style of the glyph.

A word of advise - going from scratch and redesigning a font is a time consuming business. You are therefore advised to take many backups along the way. Plus if you are new to Font editing then it is easy to make mistakes and unknowingly lose your work. Also it is advisable

during development to try installing your new Font often, so as to check just how it looks in the Avrella Program.

Important Note: The font family name must commence with the word Avr - this is very important as Avr is used as a filter when selecting the fonts to display in the Document Setup dialog box - (to prevent other inappropriate fonts for the Avrella program being displayed). In the case of MyFont typical entries are shown below alongside those of the Avrella Standard Type 1 Font for comparison.

	Avrella Standard	MyFont
Family	Avrella Standard Type 1	Avr MyFont
Sub Family	Regular	Regular
Identifier	Avrella Standard Type 1	MyFont
Full Name	Avrella Standard Type 1 Regular	MyFont Regular
Version	Version 1.00	Version 1.00
Trademark		

Having completed MyFont - you can now install it. From the Start taskbar option - select Settings and choose the Control Panel folder. The Control Panel folder will open and you will see a Fonts folder - clicking on this will display all the fonts that you currently have installed on your computer. Select File -> Install New Font. The Add Fonts dialog box will open - select the directory where your font file MyFont.ttf resides - in this example C:\MyDevelopmentFontDirectory Select MyFont and click OK to install.

On selecting the fonts to display in the Document Setup dialog box - you will now find 'Avr MyFont' which may now be selected as the chosen font for a particular score.

Editing notation, symbols, text etc.

This is a brief guide to the main editing functions for a score. (If you are new to Avrella then it is strongly recommended that you work your way through the tutorial, although this section is included as a quick refresher which just covers the basics.)

Having entered the notation for the score.

Use the [Properties Dialog](#) to change General Attributes, Style and ornamentation associated with notation (note, rest or chord).

Use the [context menu](#) for copy, cut paste actions for notation and whole measures.

[Drag](#) object into place.

[Undo](#) / [Redo](#) previous edit action on notation / symbol.

Lyrics - insertion and presentation

This is a brief guide to creating lyrics for your score and setting them up to your liking.

To demonstrate we will make use of a fictitious and simple example by using dummy numbered words so that you can better keep track of where each word should be placed on changing the score.

Using the LyricDemo.avrella example below (a copy is in the Examples directory):

Lyric Demo.
*This is an example score referenced in the application help file
(Ref: Contents -> How To -> Lyrics - insertion and presentation)*

♩ = 90

Wd1 word2 wo - rd3 Longwd4 longwd5 longwd6 longwd7

Dummy lyric words have been set up as shown, to align with the notes in the staff above. Once inserted the start of the lyric words will have a fixed **xratio** so that if the width of the measure is altered by for example changing the measures / system ([Score -> Measures per System](#)) or [Format -> Current Measure -> Width](#), then the lyrics will maintain their **xratio** so that the start of the word will still be aligned with the notation in the staff above.

To adjust the vertical positioning of the lyrics between staves select File->Document Setup for the [Document Setup Dialog](#) and adjust the Lyric Lines Y offset control to suit.

Some general points concerning use of lyrics:

On changing the zoom size for the display the closest font match is made to the appropriate zoom size. Ref: [Text Style / Lyric Format Tab](#)

On initial insert - the start of the lyric word is precise for the set **xratio**. However on subsequently changing the width of a measure etc. it will be the closest match for the **xratio** (within less than a half of one character space size). Thus it is considered preferable to have decided upon the width of measures and general layout of your score before aligning the lyric text.

For the very best possible printed output it is preferable to align the lyric text when in zoom 100% (the same scale size used for printed output).

If the width of the measure is reduced to an extent whereby there is no room for the lyric text in the measure then the words will push over into the next measure. An example of this is shown below:

Lyric Demo.
*This is an example score referenced in the application help file
(Ref: Contents -> How To -> Lyrics - insertion and presentation)*

The RH width of measure 1 has been increased by +35% resulting in the width of measure 2 being cut by -35%
Consequently there just is not enough room for the lyrics in measure 2
and they are forced out of the original alignment with longwd7 being pushed into measure 3

Wd1 word2 wo - rd3 Longwd4 longwd5 longwd6 longwd7

Navigating around the score

This is a brief guide as to how to navigate around the score. If you are new to Avrella then it is strongly recommended that you work your way through the tutorial, although this section is included as a quick refresher which covers the basics

Use of cursor - positioning etc.

[Go To Measure](#) Dialog.

[Go To Page](#) Dialog.

[Previous Page](#), [Next Page](#), [First Page](#), [Last Page](#).

Score Presentation

This is a brief guide* as to some of the ways in which you may present format the score to your liking.

Use the File -> [Document Setup](#) Dialog for positioning of staff separation etc.

File -> [Details Dialog](#) for Score Title, copyright information, Header and Footer information etc.

Use the File -> [Framework](#) Dialog for basic staff layout plus staff names etc.

[Drag](#) notation into place.

Format -> [Current Measure](#) -> Width, Bar Markings etc.

Format -> [Lyric](#) to change Font Settings for selected Lyric line.

Format -> [Note Separation Measure](#) / [Note Separation Page](#). (Can override default spacing for measure - note [x ratio](#) (displayed in status bar when notation highlighted, and use Alt -> (Hold down left hand Alt key and press right cursor arrow) to increase Alt <- to decrease value.)

Score -> [Measures per System](#) to specify desired number of measures for system(s).

*If you are new to Avrella then it is strongly recommended that you work your way through the tutorial, although this section is included as a quick refresher which just covers the basics.

Troubleshooting

In This Section

[Tips file not found.](#)

[How to get further help](#)

Tips file not found.

This is likely to be due to one of the following causes:

1. Confirm that the tooltip files (AdvTips.txt and BegTips.txt) are in the Program installation directory.

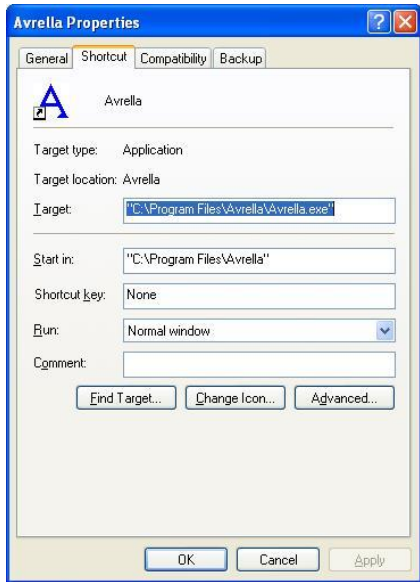
Internal error: Program not specifying full pathname on opening file and using current
2. (default) directory. A workaround is to set up The Program Start Directory for the application luaunch.

a) If launched from Start menu: Select the start menu and navigate to the Avrella icon, although do not click the left hand mouse button to launch the program. Instead click the right hand mouse button which displays the context menu. Select Properties and click on The Shortcut Tab.

b) If launched from Desktop icon. Click the right hand mouse button which displays the context menu. Select Properties and click on The Shortcut Tab.

Confirm that the start directory is the same as the program installation directory. (i.e. same as Target field above less "\Avrella.exe")

Typically:



How to get further help

If you have further queries / problems that are not answered by this help file. Then it is recommended that you visit our website www.giltrex.com and navigate to The Support section for further help.

Glossary of Terms

Glossary of musical terms

8va Accent Accidental Alla Breve
Chord Clef Common Time Compound Time
Crescendo Dash Decrescendo Dotted Notes / Rests
Dynamic Range Parentheses note Grace notes Interval
Key Signature Mordent Ottava Pause
Simple Time Slur Staccatissimo Staccato
Tempo Time Signature Tonal Range Tone
Tremolo Tuplet Turn Vibrato

The above list is by no means comprehensive, just listing a few musical terms. Far more comprehensive dictionaries may be found on the Net. One such being at [Dolmetsch online](#) (Link correct: November 2009)

Technical

ADC Amplitude Bandwidth DAC

Decibel Hertz Reverberation

File menu

The File menu offers the following commands:

New	Creates a new document.
Open	Opens an existing document.
Close	Closes a document.
Save	Saves an opened document using the same file name.
Save As	Saves an opened document to a different file name.
Save All	Saves all opened documents.
Print	Prints a document.
Print Preview	Displays the document on the screen as it will appear printed.
Print Setup	Selects a printer and printer connection.
Document Setup	Define style for this score. - header space etc.
Details	Define score title, header etc.
Framework	Define basic framework of score - number of staves etc.
Exit	Exits Avrella.

Edit menu

The Edit menu offers the following commands:

Undo	Reverse previous editing operation.
Redo	Redo previous undo operation.
Cut	Deletes data from the document and moves it to application data buffer.
Copy	Copies data from the document to the application data buffer.
Paste	Pastes data from the application data buffer into the document.
Standard Entry	Standard Entry - select standard input entry.
Clear Current Measure	Clears all notation etc. from the current measure.
Hard Clear Current Measure	As above, but will remove any Clefs, Key & Time Signatures and Tempos in the measure as selected via Items to delete in addition to notation Dialog
Delete Measure	Launches Delete Measure Dialog to specify measure(s) to be deleted.
Lyrics	Switch between edit and view mode for lyrics
Delete Lyric Line	Having selected edit via Lyrics command used to remove entire lyric line
Go To Measure	Launches Go To Measure Dialog to specify measure to go to.
Go To Page	Launches Go To Page Dialog to specify measure to go to.

View menu

The View menu offers the following commands:

[Toolbars](#) Shows or hides the toolbars.

[Status Bar](#) Shows or hides the status bar.

[Zoom](#) Zoom dialog.

[Refresh Display](#) Refresh Display.

[Volume Graph](#) Overlays MIDI volume settings for notation.

[First Page](#) Go to the first page in the score.

[Previous Page](#) Go to the previous page in the score.

[Next Page](#) Go to the next page in the score.

[Last Page](#) Go to the last page in the score.

Insert menu

The Insert menu offers the following commands:

Note Insert note into score.

Notation Insert various notation Clef, Key Sig. Tempo into score.

Rest Insert rest into score.

Lyric Line Insert lyric line into score.

Text Insert text into score.

Measure Insert measure(s) into score.

Format menu

The Format menu offers the following commands:

Time Interval	Set time interval for notation to be inserted.
Accidentals	Set up appropriate accidental to take effect for insertion of notes.
Dots	Set appropriate dot period to take effect for insertion of notes / rests.
Tuplet	Sets entry mode to tuplet.
Tuplet Parameter	Format tuplet parameters/ratio.
Lyric	Set character format for lyric line.
Current Measure	Set properties for current measure.
Note separation Meas.	Format measure for standard note separation based on time interval.
Note separation Page	Format page for standard note separation based on time interval.

Tools menu

The Tools menu offers the following commands:

Record Currently record facility from a Midi keyboard is not supported. However this is to be implemented in a future 1.xx release of Avrella. Although by use of a Midi sequencer you may record a Midi file and then import the generated. A recommended Midi sequencer is Jazz++ freely available from www.jazzware.com

Play Plays the current score.

Pause Pauses the playing of the current score.

Stop Stops the playing of the current score.

Volume Define MIDI volume level for a range of notation.

Options Sets entry mode to tuplet.

Score menu

The Score menu offers the following commands:

[Insert Page](#) Inserts new page(s) into score.

[Delete Current Page](#) Delete current page from score.

[Clear Current Page](#) Clears current page of notation.

[Measures per system](#) Sets measures per system.

Window menu

The Window menu offers the following commands, which enable you to arrange multiple views of multiple documents in the application window:

Standard Palette	Shows or hides the standard palette.
Guitar Palette	Shows or hides the guitar palette.
Supplementary Palette	Shows or hides the supplementary palette.
New Window	Creates a new window that views the same document.
Cascade	Arranges windows in an overlapped fashion.
Tile	Arranges windows in non-overlapped tiles.
Arrange Icons	Arranges icons of closed windows.
Window 1, 2, ...	Goes to specified window.

Help menu

The Help menu offers the following commands, which provide you assistance with this application:

Tip of the
Day

Shows tip of the day.

Contents

Display Help Contents

Launch the Avrella Beginners Tutorial.

Tutorial

(Note: For the registered version, if you switch off Display tutorial message boxes and notes, this menu item will not be displayed.)

Displays the About Dialog box

About

Shows version release information plus links to website, product support and donation page.

Guitar Palette command (Window menu)

Use this command to display and hide the [Guitar Palette](#).

Standard Palette command (Window menu)

Use this command to display and hide the [Standard Palette](#).

Supplementary Palette command (Window menu)

Use this command to display and hide the [Supplementary Palette](#).

Guitar Palette

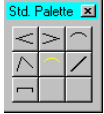
The guitar palette allows you to enter various common marks, symbols etc. related to the guitar.



Click on the appropriate palette item for further information.

Standard Palette

The standard palette allows you to enter various common marks, symbols and notation into the score.



Click on the appropriate palette item for further information.

Supplementary Palette

The supplementary palette allows you to enter various common marks, symbols etc. related to the guitar.

Important Note: All the symbols in the supplementary palette can be selected by association with the relevant notation by use of the [Properties Dialogs for Objects](#) - which is absolutely the preferred method. However it is recognised that there may be the odd occasion for which you might wish to insert one of these symbols without any particular association to a note. It is for this purpose that the Supplementary Palette is provided.

Click on the appropriate palette item for further information.

Font Software Packages

Macromedias Fontographer

The best known. However if you are just going to be a part time user then it does not come cheap.

Fontographer 4.1.5 - US \$349.

The Avrella Standard Type 1 and Freestyle Type 1 fonts were developed for release using this package.

Macromedia had not continued further development of this program from the current 4.1 release dated 1996. However in May 2005 it was announced that FontLab would licence the Fontographer product line from Macromedia. Along with this announcement was the commitment to work on fixing bugs and preparing a new version. The current Windows release is 4.1.5.

FontLab

FontLab Studio 5.0 - US \$649.

TypeTool* 2.0 US \$99.

*Lite version of FontLab - does the basics.

Softy by D.W. Emmett

The original Avrella Standard and Freestyle fonts were created using this editor. Whilst not having all features of its more expensive rivals - the price is just £15 (approx US \$25) - good value for money. Link to Softy Homepage at

www.giltrex.com/Avrella/Fonts/FontSoftwarePackages.htm

(All prices quoted were taken February 2006)

Further information - ref. TrueType and Font Tools etc. - check out - www.true-type-typography.com

Check out www.giltrex.com/Avrella/Fonts/Fonts.htm for current information

Properties Dialogs for Objects - overview

One of the most useful features for ease of editing the notation is the Properties dialog (selected by double clicking on the supported notation object) which consists of an array of Property Sheets, the number and type dependant on the object selected.

Notation object	Property sheets displayed
Note	Properties - General; Properties Style; Properties - Ornamentation; Properties - Ornam #2; Properties - Tab. (Note)*
Chord	Properties - General; Properties Style; Properties - Symbol; Properties - Tab. (Chord)*
Rest	Properties - General

*Only displayed if tablature staff below notation.

Pull Right context sensitive menu

Various editing facilities are available dependant on the position of the cursor and thus the object type selected, through the pull right (context sensitive) menu (PRM):

(For the sake of clarity the popup menus for all objects are not listed here. A full list of objects can be found by reference to [Object Classification](#), which along with all the available objects lists the family groups. Objects in the same family group can be manipulated in a similar manner to each other, having similar popup menus etc.)

Object Type	PRM options	Description
<i>Note</i>	Cut note	Cuts the note to memory buffer.
	Copy note	Copies the note to memory buffer.
	Flip tail	Inverts the tail direction - e.g. if tail up displays note with tail down.
	Property Summary	Displays summary of note properties: Staff No. , Measure No. and X Ratio .
<i>Chord</i>	Cut chord	Cuts the chord to memory buffer.
	Copy chord	Copies the chord to memory buffer.
	Delete chord note	Deletes the highlighted chord note from the chord - have to place cursor precisely on the chord note. (If the Chord note deleted results in just one note remaining - object reverts to note type.)
	Flip note horiz.	Will display the chord note in the other horizontal direction. This is an aid to presentation for typically the case where two notes are a half staffline space apart.

	Flip tail	Inverts the tail direction - e.g. if tail up displays note with tail down.
	Property Summary	Displays summary of chord properties: Staff No. , Measure No. and X Ratio .
<i>Mark</i>	Delete	Deletes the highlighted mark.
	Solid- >Dotted- >Dashed	Set mark as Solid Dotted or Dashed.* (If mark is currently Solid selecting sets it to Dotted. Selecting again sets it to Dashed. Selecting again sets it back to Solid etc.) * applies to some marks only.
Only applicable for slur	Flip slur	Inverts the slur sweep - e.g. if slur sweeps up displays slur sweep down.
	Property Summary	Displays summary of Mark properties: Staff No. and Measure No.
<i>Other (non associated) objects (Pause; Chord Diagram; Accents etc.)</i>	Cut	Cuts the object to memory buffer.
	Copy object	Copies the object to memory buffer.
	Property Summary	Displays summary of object properties: Staff No. and Measure No.
<i>No object selected and object stored in memory buffer</i>	Paste [object]	Inserts the cut / copied object stored in the memory buffer into the score at the selected position.
	Flush [object]	Flushes the cut / copied object from the memory buffer - note this action required if you have cut a note and now wish to use the Measure PRM options - see below.

*No object selected - cursor
within measure grid lines -
plus no object stored in
memory buffer - ref.: above*

Clear (Cut)
Measure
Cuts the measure to memory buffer. Note this only deletes the regular objects in the measure. It does not delete [Clef](#), [Key Sig](#), [Time Sig](#) and [Tempo](#) data related to this measure. (Ref.: Edit -> [Hard Clear Current Measure](#) for this facility.)

Copy
Measure
Copy the measure to memory buffer. Note this only copies the regular objects in the measure. It does not copy [Clef](#), [Key Sig](#), [Time Sig](#) and [Tempo](#) data related to this measure.

Paste
Measure
Pastes the measure buffer contents to the selected measure.

Default
Spacing
Sets the default spacing for notation in measure - ref.: [Note Separation](#)

Moving / Dragging objects

Certain objects entered in the score may be re-positioned by moving / dragging them into the desired position.

Object	Highlight by	Move properties
Note	Clicking on note head.	<p>x axis - within measure; y axis - up / down for staff. Also to move a note by a fine amount Select Alt + <- / -> (i.e. hold down the Alt key and select the left arrow or right arrow) and the note will be shifted by 0.25% X ratio - the value for the Xratio is displayed to the right in the status bar if it has been selected via Tools->Options->Status Bar Tab.</p> <p>To lengthen the tail at either end of a beam - e.g. a beamed group of 4 16ths as shown:</p>
Beam tails	Click on tail at either end of the beam.	<p>click on either end and drag tail up or down. (*An alternative method is highlighting the start / end note tail head and selecting Alt + ^ / v (i.e. hold down the Alt key and select the up arrow or down arrow)</p>
Rest	Clicking on centre.	x axis - within measure
Chord	Clicking on note head.	x axis - within measure; y axis - individual note heads up / down
Standard Palette		
Crescendo	Clicking on the left intersection.	Can't move once placed.

Decrescendo	Clicking on the bottom left point.	Can't move once placed.
Slur	Clicking on the 'starting' left point.	Can't move once placed.
3 point	Clicking on the start point (when created - if not highlighted on the left hand start point - click on the other end).	Can't move once placed.
Free slur / Line / Bracket	Clicking on the 'starting' left point.	Can't move once placed.
Guitar Palette		
Bend (slope)	Clicking on the 'starting' left point.	Can't move once placed.
Bend (straight)	Clicking on the 'starting' bottom point.	Can't move once placed.
Bend and release	Clicking on the 'starting' left point.	Can't move once placed.
Bend, hold and release	Clicking on the 'starting' bottom point.	Can't move once placed.
Hammer / pull	Clicking on the 'starting' left point.	Can't move once placed.
Chord diagram	Clicking on the bottom left of the grid.	x axis - within system, y axis - within staff.
Vibrato / Wide vibrato / Vibrato + wang	Clicking on the 'starting' left point.	Can't move once placed.

Supplementary Palette

Accidental /

Accent / Mordent /

Pause / Turn /

Custom

Clicking on the centre. x axis - within system, y axis - within staff.

Grace

Clicking at the bottom. x axis - within system, y axis - within staff.

Undo/Can't Undo command (Edit menu)

Use this command to reverse the last editing action, if possible. The name of the command changes, depending on what the last action was. The Undo command changes to Can't Undo on the menu if you cannot reverse your last action.

Shortcuts

Toolbar:

Keys:

CTRL+Z or

ALT-BACKSPACE

Redo/Can't Redo command (Edit menu)

Use this command to redo the last undo action, if possible. The name of the command changes in the menu, depending on what the last undo was. The Redo command changes to Can't Redo on the menu if you cannot reverse your last action.

Shortcuts

Toolbar:

Keys:

CTRL+Y

Measures per System (Score menu)

Use this command to define measures for a particular system in the score. On selecting this command the [Measures per system dialog box](#) is displayed.

Width Tab

Allows the width of the measure to be altered.

LHS spinbutton Set the width of the left hand side of the measure to between -35% and +35% of its standard width.

RHS spinbutton Set the width of the right hand side of the measure to between -35% and +35% of its standard width.

Set Default Set the width of measure to standard width.

Note: For the case where the measure is at the start of system, left hand side of measure may not be altered. Conversely where the measure is at end of system, right hand side of measure may not be altered.

File Document Setup Tabbed Dialog

The two dialog tabs Active Document and New Document allow set up of the style settings for the active document plus the default settings for any new document created. The operation of the controls for these two tabs is identical, the former Active affecting the current document, the latter New setting the defaults for any subsequent new documents created.

Page groupbox

Header slider Sets header as measured in [staffline space units](#) between the top of the page and the top of the first staff. Can be set from 8 through to 16.

Staff separation slider Sets separation as measured in [staffline space units](#) between the staves in a [system](#). Can be set from 6 through to 12.

Left margin slider Sets left hand margin for the score as measured in [quarter-staffline space units](#) between the staves in a [system](#). Can be set from 7 through to 13.

First Page groupbox

Header Indent slider Sets indentation of initial system on the first page of the score. Can be set from 0 (no indentation) to 7 [staffline space units](#). The indentation set is in addition to the page header.

First System

Indent groupbox

Slider

Sets left margin indentation of initial system on the first page of the score. Can be set from 0 (no indentation) to 10 [staffline space units](#).

Notation Type Face combo box.

Select the notation font style for this document. There are two notation fonts supplied with Avrella - 'Avrella Standard Type 1' and 'Avrella Freestyle Type 1'. On selection a sample output is displayed below the combo box. You are free to design your own fonts for use with Avrella - refer to [Creating custom notation fonts](#) for Avrella.

Tempo push button

Select this button to set up the initial tempo setting. On selecting this button a [Tempo dialog box](#) is displayed.

Midi Volume Button

(New Documents Tab only)

Select this button to set the default midi volume for note entry when creating a new document. On selecting this button a [Default Midi Volume for Staff Dialog](#) is displayed. (The default Midi volume value set is displayed on the button.)

Set Defaults push button

Sets all controls to default settings. (Note - leaves tempo setting unchanged, select Tempo push button to set up default tempo setting)

Lyric lines Y

offset

spin control

Sets the centre offset for lyric display between staves. (Y offset range -12 to 12 in units of a quarter [staffline space units](#).)

Measure Nos.

Group Box

[Display checkbox](#) Displays measure numbers.

[Include first checkbox](#) Includes the first measure number for the first measure.

[Start of system only checkbox](#) Only displays measure number at the first measure of each system rather than above each measure in the system.

[Include print page overflow checkbox](#) In the case where there are more staffs in the system than can fit on the printed page, setting this checkbox will print out the measure number at the top of the first staff of the next page for the continuation of the system printout.

[Space above staff spinbutton](#) Set distance between the measure number and the top of the staff in units of half staffline line spaces.

Default Measures per System spin control

Sets the measures per system for new pages created.

Measure No.

Style

[Font Button](#) Select this button to set up the font settings for the measure number. On selecting this button a [Font dialog box](#) is displayed.

Acc. Spacing Group Box

Proportional checkbox

For any accent associated with a note - if this checkbox is set then the spacing between the accent and the note will remain proportional - dependant on the measure width. Consequently the accent will be drawn closer to the note as the measure width is reduced - converse if you increase the measure width. Not setting this checkbox results in the space being the same whatever the measure width.

Note: This is an overall setting. You can set a particular accent to be the opposite of the setting here via Format -> Current Measure [Layout Tabbed Dialog](#)

Tab Group Box

Use checkbox

If guitar tablature is used in the score - designates use of a tab symbol 'T' rather than TAB aligned vertically at the start of the system.

Font Button

Select this button to set up the font settings for the measure number. On selecting this button a [Font dialog box](#) is displayed.

(New entry) Mark Widths Group Box

Specify the width of the pen that draws the various marks when they are created (Note: You may subsequently change the width of an individual mark via the mouse right click [pull right menu option Property Summary](#)). The program default settings for penwidths is 1 (multiplied by scale displayed) with the exception of Slur which is set to 4. You have the option to set the pen width from 0 through to 10. Note: When setting the penwidth to 0, the width will always be displayed as 1 pixel wide - whatever the scale size selected.

<p>Crescendo / Decrescendo {The file 'C:\Data\hg\AIT\Libraries\...\Dev\Avrella\res\dlg_cres.bmp' could not be found.}</p>	<p>Select pen width for crescendo /decrescendo.</p>
<p>Slur {The file 'C:\Data\hg\AIT\Libraries\...\Dev\Avrella\res\dlg_slur.bmp' could not be found.}</p>	<p>Select pen width for slurs</p>
<p>Lines {The file 'C:\Data\hg\AIT\Libraries\...\Dev\Avrella\res\dlg_line.bmp' could not be found.}</p>	<p>Select pen width for lines</p>
<p>Bends {The file 'C:\Data\hg\AIT\Libraries\...\Dev\Avrella\res\dlg_bend.bmp' could not be found.}</p>	<p>Select pen width for bends.</p>
<p>Vibrato {The file 'C:\Data\hg\AIT\Libraries\...\Dev\Avrella\res\dlg_vib.bmp' could not be found.}</p>	<p>Select pen width for vibrato symbol (guitar).</p>
<p>Wide vibrato {The file 'C:\Data\hg\AIT\Libraries\...\Dev\Avrella\res\dlg_wvib.bmp' could not be found.}</p>	<p>Select pen width for wide vibrato symbol (guitar).</p>
<p>Vibrato plus tremolo{The file 'C:\Data\hg\AIT\Libraries\...\Dev\Avrella\res\dlg_vib_p_w.bmp' could not be found.}</p>	<p>Select pen width for vibrato plus tremolo action symbol (guitar).</p>
<p>Width spin button</p>	<p>Having selected the desired mark type - use this spin button to adjust the drawing width of the mark.</p>

Text Style / Lyric Format Tab

Font Button

Select this button to set up the font settings for the text. On selecting this button a [Font dialog box](#) is displayed.

(Note that the font point size selection available refers to the font point size that will be displayed at Zoom / Scale size 100% (this is also the scale used for printed output). Refer to the Note: Further information regarding font point sizes for lyrics and text at the bottom.)

Current Setting as Initialise

Only applicable for Text Style Tab

Save

Saves the current settings as the default type text style on text entry.

Basic Font Style

Italics

Quick method of setting to Italics, rather than going via Font Dialog box.

Further information regarding font point sizes for lyrics and text at the bottom.

On changing the zoom size for the display the closest font match is made to the appropriate zoom size. The lyric Font sizes (Format -> Lyric -> Style -> Font) are selectable between point size 8 and 11 - these values refer to the point size that will be displayed for Zoom 100%.

For lyric font selection the point size is between 8 and 11. For use with Text the point size is between 8 and 24.

For lyrics if changing the font after lyric text entry, then due to font size differences some editing of the white space between lyric words may be necessary.

Go To Measure command (Edit menu)

Use this command to go to a measure in the score. On selecting this command the [Go To Measure dialog box](#) is displayed.

Shortcuts

Toolbar:

Keys:

CTRL+M

Go To Page command (Edit menu)

Use this command to go to a page in the score. On selecting this command the [Go To Page dialog box](#) is displayed.

Shortcuts

Toolbar:

Keys:

CTRL+G

Previous Page command (View menu)

Use this command to display the previous page of the score.

Shortcut

Toolbar:

Next Page command (View menu)

Use this command to display the next page of the score.

Shortcut

Toolbar:

First Page command (View menu)

Use this command to display the first page of the score.

Shortcut

Toolbar:

Last Page command (View menu)

Use this command to display the last page of the score.

Shortcut

Toolbar:

Document Setup command (File menu)

Use this command to set up the style settings for the active document plus the default settings for any new document created. On selecting this command Avrella displays the [Document Setup tabbed dialog box](#)

Shortcut

Toolbar:

Details command (File menu)

Use this command allows set up of Song title, header information etc. via the tabbed dialog with the following Tabs:

[Composition Details](#)

[Header](#)

[Footer](#)

Shortcut

Toolbar:

Framework command (File menu)

Use this command to set up the basic score framework layout. Avrella displays the [Framework dialog box](#)

Shortcut

Toolbar:

Current Measure command (Format Menu)

Allows the set up of the current measure. There are various tabbed dialog pages which allow the setup of the selected measure:

[Width.](#)

[Bar Markings.](#)

[Ottava\(8va\).](#)

[Layout](#)

Note Separation Measure command (Format menu)

Format measure for standard note separation based on time interval.

Shortcut

Toolbar:

Also when in measure boundary - [pull right menu](#)

Ottava / 8va

8va or 8:

When shown over notes, indicates that the notes should be played one octave higher than written. If under notes - play one octave lower than written. (In which case it is common to write "8va bassa" - rather than just "8va" so as to avoid any possible confusion with the octave sign for high notes.)

15ma or 15:

The Italian abbreviation of quindicesima, indicating the interval of a fifteenth (i.e. the double octave). When shown over notes, indicates that the notes are to be played two octaves higher than written. (16va and 16ma are often mistakenly used, but a two-octave interval is a fifteenth thus abbreviated 15ma.)

Accent

To give a note a special accent or emphasis, an accent may be put over the note. Shown here horizontally, it is sometimes marked vertically. (Inverted V)

Accidental

Symbols used to indicate an adjustment of pitch for a standard pitch A through to G.

<p>{The file 'C:\Data\hg\AIT\Libraries\...\Dev\Avrella\res\dlgmshp.bmp' could not be found.}</p>	<p>Sharp - adding this after a note raises it by a semi-tone.</p>
<p>{The file 'C:\Data\hg\AIT\Libraries\...\Dev\Avrella\res\dlgmflat.bmp' could not be found.}</p>	<p>Flat - adding this after a note lowers it by a semi-tone.</p>
<p>{The file 'C:\Data\hg\AIT\Libraries\...\Dev\Avrella\res\dlgmdshp.bmp' could not be found.}</p>	<p>Double sharp - adding this after a note raises it by a tone.</p>
<p>{The file 'C:\Data\hg\AIT\Libraries\...\Dev\Avrella\res\dlgmdflt.bmp' could not be found.}</p>	<p>Double flat - adding this after a note lowers it by a tone.</p>
<p>{The file 'C:\Data\hg\AIT\Libraries\...\Dev\Avrella\res\dlgnat.bmp' could not be found.}</p>	<p>Natural - adding this after a note indicates that note is played as is - i.e. overrides any sharp or flat that maybe given in the score key signature.</p>

Alla Breve

Use of a capital C with a vertical line through the centre to indicate alla breve* time, where the beats are to be **minim**'s. However this does not define the number of beats to bar - thus this sign indicates 2/2 or 4/2 time.

* Or sometimes referred to as cut **common time**. i.e. **Common time** with a cut / line through it.

Clef

Symbol on staff that determines the pitch of the note relative to its staff position. As a rule the clef chosen is related to the type of instrument played, so that the majority of the notes written remain on the staff.

The staff above shows the note middle C and its position on the staff as determined by the treble clef, bass clef, alto clef and tenor clef.

Common Time

Use of a capital C to indicate 4/4 time. Referred to as common time or imperfect time.

(The symbol derives from a broken circle used in early music, for which a full circle indicated 3/4 time: "perfect time").

Compound Time

With compound time the beat is usually divided into 3 parts, as opposed to simple time where the beat is divided into 2 parts and then often subdivided into 4 parts.

Compound time signatures allow the beat to be divided into 3 parts and then subdivided into 6 parts. Typical compound time signatures are 6/8, 9/8, 12/8, 6/16, 9/16, 6/4, 9/4. With compound time the top number in the time signature usually does not represent the number of beats in a measure and the bottom number usually does not represent the kind of a note receiving a beat. For compound time the top number usually must be divided by 3 to determine how many beats are in a each measure and the bottom number/note must be enlarged by three times to determine the type of note that equals a beat. If the bottom number is a 16 or 16th note then it is multiplied 3 times to a dotted eighth note which would be the note value for a beat.

Rules: The beat is a dotted note and the top number is divisible by '3'.

Examples

Time Signature Derivation

Beat value

6/8	$6/3 = 2$ beats of a dotted $1/4$ note (i.e. $3 \times 1/8$)
9/8	$9/3 = 3$ beats of a dotted $1/4$ note (i.e. $3 \times 1/8$)
12/8	$12/3 = 4$ beats of a dotted $1/4$ note (i.e. $3 \times 1/8$)
6/16	$6/3 = 2$ beats of a dotted $1/8$ note (i.e. $3 \times 1/16$)
9/16	$9/3 = 3$ beats of a dotted $1/8$ note (i.e. $3 \times 1/16$)
6/4	$6/3 = 2$ beats of a dotted $1/2$ note (i.e. $3 \times 1/4$)
9/4	$9/3 = 3$ beats of a dotted $1/2$ note (i.e. $3 \times 1/4$)

Crescendo

Italian term used to indicate gradually louder. Ref. [Change of Volume table](#),

Often the following symbol is used instead:

Decrescendo

Italian term used to indicate gradually softer. Ref. [Change of Volume table](#),

Often the following symbol is used instead:

Dotted Notes and rests

Notes and rests may be lengthened by the addition of a dot or dots immediately afterwards.

One dot lengthens the time interval by half the value of the original note or rest.

Two dots lengthens the time interval by three quarters the value of the original note or rest.

i.e. half of the value(first dot), plus a quarter of the value(second dot).

Examples A dotted [crochet](#) is equivalent to three [quavers](#). Add a second dot and it is now equivalent to seven [semiquavers](#):

Ghost Note

Note that is: implied / unintentionally sounded / faintly sounded for effect. Typically found notated in transcriptions where say in the case of the guitar, the guitarist has unintentionally struck another string where the fret hand has dampened the note (thus sounding at a low level) or that some other action has caused another string to slightly ring.

Grace Note

The grace note, commonly drawn as a miniature eighth note with a small crossbar through the stem, is used to signify notes of such a short length that it is unnecessary to compute their exact length. (The grace note is not counted when adding up the beats in a measure - its short time slice being commonly taken from the preceding note, although sometimes the following note.)

There is another less commonly used grace note - drawn without the small crossbar through the stem. It is usually found in old music. However with this interpretation the grace note without the crossbar, is to play it as if it were a real note of time value indicated by its stem:

Traditional terms:

acciaccatura - bar

appoggiatura - no bar

Intervals

For a piano the smallest distance between two notes is called a **semitone**. E.g. the distance between C (white key) and C# (black key), whereas the interval between C (white key) and D (white key) is 2 intervals - this is referred to as a **tone**.

For the Key of C Major - the intervals are:

C	D	E	F	G	A	B	C
Interval	Interval	Interval	Interval	Interval	Interval	Interval	
2 = Tone	2 = Tone	1=Semi - tone	2 = Tone	2 = Tone	2 = Tone	1=Semi - tone	

Note: Tone is often referred to as a whole step. Semitone as a half step.

Key

Specifies the key of the composition. It consists of a group of sharps or flats, never a mixture of both*. The adoption of a key signature eases the legibility of a piece of music. For example if a piece was written in C# Major without the key signature, then the number of sharp accidentals cluttering up the score would make the piece untidy and difficult to follow.

* Note in Avrella it is possible to set a custom key signature which does consist of sharps and flats - this was a requested option.

Mordent

Defined as three notes played in the time of the principle note: Principal note; note above (upper mordent) / note below (lower mordent); principal note.

{The file 'C:\Data\hg\AIT\Libraries\...\Dev\Avrella\hlp\mordent.bmp' could not be found.}

A double mordent repeats the first mordent.

Pause (Italian: Fermata) symbol

To indicate that a note or a group of notes must be held for a pause in the music. The dot is nearest to the head of the note.

Simple Time

Simple time signatures are straightforward in that the measure beat is an undotted note. It is clear how many beats there are in the each measure plus what is the value of the note that is used to signify a beat.

In this example:

The time signature is $3/4$. The '3' indicates that there are 3 beats in every bar, and the '4' indicates that each beat is one quarter note long. Note that the eighth notes are beamed together in groups of two which equals one quarter note. Notating it this way groups sub $1/4$ notes in to beat periods.

All simple time signatures follow certain rules:

The beat is an un-dotted note.

The beat may be cleanly divided by two into two note values (i.e. with no remainder part).

With the exception of a time signature with a 3 to indicate the beats per measure (top figure), the top figure is not divisible by 3.

The number of beats in every measure are shown (i.e. $3/4$ means: 3 quarter note beats in every measure).

Slur

Notes marked with a slur are to be played as smoothly as possible, without any interruption in sound.

Staccatissimo

Shown as a small triangular symbol above or below the head of a note - shortens the note by three quarters.

Staccato

Shown as a dot above or below the head of a note - shortens the note by a half.

Tempo

The speed of the beats in a piece of music is called the tempo and it is usually marked at the start of a piece of music by a word or phrase. For example the composer might say 'Very fast' or 'Fast with spirit' or 'Slowly'. At the time that this system was becoming commonplace Italy dominated the musical world, and consequently musicians of all nations tended to use the Italian words for these instructions. There are very many of these words in use. The [Tempo table](#), lists the commonly used terms which are available via the [Text Entry tabbed dialog](#) in Avrella. (Any terms that are not available through the [Text Entry tabbed dialog](#) may be entered as custom text.)

Often the tempo is marked explicitly as a metronome mark which may be selected via the [Tempo dialog box](#) For example:

This indicates that the music should be played at a fast tempo of 120 beats a minute.

Typically medium tempo is described for most as somewhere between 60 to 90 beats per minute. Fast tempo being above 90 and slow tempo being below 60. Using the general terms Slow tempo, Medium tempo and Fast tempo is to give a rough idea, whereas to use a metronome marking is to be specific about the speed.

Time Signature

Specifies the number of beats in a bar and the value of each beat. The upper figure (numerator) is the number of beats in each bar. The lower figure (denominator) specifies the value of each beat. For example $2/4$ time indicates 2 beats in each bar, with each beat being a [crotchet](#)

Tone

Usage #1: To describe difference in pitch ([interval](#)) equivalent to two semi tones.

Usage #2: the quality of a musical instrument or voice.

Tremolo

1. Stringed instrument: a rapid reiteration of a note by back and forth strokes of the bow.
2. Stringed instruments and other instruments: fast alternation between 2 notes.

Note: A tremolo is the rapid iteration or alternation of notes, whereas [vibrato](#) is the fluctuation of pitch.

Tuplet

Generic term given to a group of notes where a different beat is required.

Examples

Tuplet Type Description

A group of three notes played in the same time as two notes of the same note

Triplet



value as in this example:

Simple time: A group of 5 notes played in the same time as 4 notes of the same note value as in this example. **Compound time:** A group of 5 notes played in the same time as 3 notes of the same note value as in this example.

Simple time: A group of 7 notes played in the same time as 4 notes of the same note value as in this example. **Compound time:** A group of 6 notes played in the same time as 3 notes of the same note value as in this example.

Turn

The basic sign for the turn (horizontal):

The turn may be shown vertical, mirrored, a bisecting stroke drawn through it, plus include accidentals above or below the turn.

Some basic explanations:

Turn written above a note

When written above a note it is played as a group of 4 notes in the following order (a) the note above the principal note (b) the principal note (c) the note below (d) the principal note. Including an accidental above the turn sign alters the higher note of the turn; including an accidental below the turn alters the lower note. Otherwise only notes of the [diatonic scale](#) are used.

Inverted turn

For an inverted turn written again as a group of 4 notes in the following order (a) the note below the principal note (b) the principal note (c) the note above (d) the principal note.

There are many more possibilities explanations of which are too extensive to detail here.

For further information on musical theory / notation etc. - ref.: [bibliography](#)

Vibrato

A rapid regular fluctuation in pitch.

Amplitude

Strength of a signal.

In acoustic terms: Amplitude is the fluctuation in the air pressure caused by a sound.

In (analogue) electrical terms: The voltage of a signal.

DAC (Digital-to-analogue conversion)

Method of converting digital signals (on and off) to an analogue signal. [ADC](#) is the reverse operation.

Digital signals are used in modern day electronic equipment.

To distinguish between analogue and digital signals it might be easiest to consider the modern day stages between recording an orchestra and listening to the resultant CD in your living room.

The natural analogue sound waves are picked up by microphones which produce an analogue electrical signal.

This analogue signal is converted to a digital representation for transfer to a digital tape recorder.

After the necessary digital mixing and production, a CD is pressed containing the digital representation of the concert performance.

On playing back the CD the digital signal on the CD is converted to an analogue signal by the CD player for output to an amplifier and speakers.

The above is a simplified account, but the essential stages are there.

Decibel

A decibel (dB) is a logarithmic unit which in acoustics is used to compare the intensity of sound.

0dB - the quietest sound that a person with normal hearing can detect.

60dB - normal conversation.

90dB - a loud factory environment.

120dB - a nearby clap of thunder.

140dB - threshold of pain.

Sound levels above 85 dB have the potential to cause permanent damage to a persons hearing. (Ref: www.dangerousdecibels.org)

Hertz

A Hertz is defined as one cycle per second. In acoustics this is the unit which measures the frequency of a note. (The frequency of middle C is 261.6Hz for the [Equal Tempered scale](#). The human ear can usually detect frequencies in the range 20Hz - 20kHz.)

New command (File menu)

Use this command to create a new document in Avrella. Select this command will prompt you for the Composition Details in the [Details dialog box](#).

Having entered the details and clicking OK, you will be prompted to define the Music Sheet Framework in the [Music Sheet Framework dialog box](#)

You can open an existing document with the [Open command](#).

Shortcuts

Toolbar:

Keys:

CTRL+N

Open command (File menu)

Use this command to open an existing document in a new window. You can open multiple documents at once. Use the Window menu to switch among the multiple open documents. See [Window 1, 2, ... command](#).

Specify the type of document you wish to create:

Avrella score document type *.avrella

Import MIDI type file(*.MID) to Avrella type document

You can create new documents with the [New command](#).

Shortcuts

Toolbar:

Keys:

CTRL+O

Close command (File menu)

Use this command to close all windows containing the active document. Avrella prompts you to save any unsaved changes to your document before you close it. If you close a document without saving, you lose all changes made since the last time you saved it. Before closing an untitled document, Avrella displays the [Save As dialog box](#) and prompts you to name and save the document.

Save command (File menu)

Use this command to save the active document to its current name and directory. When you save a document for the first time, Avrella displays the [Save As dialog box](#) so you can name your document. If you want to change the name and directory of an existing document before you save it, choose the [Save As command](#).

Shortcuts

Toolbar:

Keys:

CTRL+S

Note: This command is enabled only when there are changes to be saved.

Save As command (File menu)

Use this command to save and name the active document. Avrella displays the [Save As dialog box](#) so you can name your document.

To save a document with its existing name and directory, use the [Save command](#).

Save All command (File menu)

Use this command to save all the open documents to their current name and directory.

Shortcuts

Toolbar

Print command (File menu)

Use this command to print a document. This command presents a [Print dialog box](#), where you may specify the range of pages to be printed, the number of copies, the destination printer, and other printer setup options.

Shortcuts

Toolbar:

Keys:

CTRL+P

Print Preview command (File menu)

Use this command to display the active document as it would appear when printed. When you choose this command, the main window will be replaced with a print preview window in which one or two pages will be displayed in their printed format. The [Print Preview toolbar](#) offers you options to view either one or two pages at a time; move back and forth through the document; zoom in and out of pages; and initiate a print job.

Shortcuts

Toolbar:

Print Setup command (File menu)

Use this command to select a printer and a printer connection. This command presents a Print Setup dialog box, where you specify the printer and its connection.

Exit command (File menu)

Use this command to end your Avrella session. You can also use the Close command on the application Control menu. Avrella prompts you to save documents with unsaved changes.

Shortcuts

Mouse: Double-click the application's Control menu button.

Keys: ALT+F4

Cut command (Edit menu)

Use this command to remove the currently selected data from the document and put it on the application data buffer*. This command is unavailable if there is no data currently selected.

Cutting data to the application data buffer* replaces the contents previously stored there.

(*Note: For Lyric data, application data buffer to read clipboard.)

Shortcuts

Toolbar:

Keys: CTRL+X

Copy command (Edit menu)

Use this command to copy selected data onto the application data buffer*. This command is unavailable if there is no data currently selected.

Copying data to the application data buffer* replaces the contents previously stored there.

(*Note: For Lyric data, application data buffer to read clipboard.)

Shortcuts

Toolbar:

Keys:

CTRL+C

Paste command (Edit menu)

Use this command to insert a copy of the application data buffer* contents at the insertion point. This command is unavailable if the application data buffer* is empty.

(*Note: For Lyric data, application data buffer to read clipboard.)

Shortcuts

Toolbar:

Keys: CTRL+V

Standard Entry command (Edit menu)

Use this command to select standard input entry. Typically this command is selected after you have been using one of the palette tools such as the crescendo tool from the [Standard Tools Palette](#).

Shortcut

Toolbar:

Keys:

CTRL+V

Clear Current Measure command (Edit menu)

Use this command to clear the current measure - the current measure being indicated by where the cursor is. (The current measure number is displayed in the [Status Bar](#).) Note: Only applies to measure on active staff.

Shortcuts

Keys: CTRL+K

Popup: [Right click context sensitive menu](#)

(Note: popup menu is not enabled for Tablature staff selection.)

Hard Clear Current Measure command (Edit menu)

Use this command to hard* clear the current measure - the current measure being indicated by where the cursor is. (The current measure number is displayed in the [Status Bar](#).) Note: Only applies to measure on active staff.

* Hard clear - in addition to normal clear - deletes [Tempo](#), [Clef](#), [Key](#) and [Time Signature](#) information.

Note: You may delete [Tempo](#), [Clef](#), [Key Signatures](#) via the [Pull Right Menu](#)

Shortcuts

Keys: CTRL+H

Items to delete in addition to notation Dialog

For Hard clear. Select items in addition to notation that are to be deleted:

Item

Clef Select to delete any Clef(s) in this measure for this staff.

Key Signature Select to delete any Key Signature for all staves for this measure.

Time Signature Select to delete any Time Signature for all staves for this measure.

Tempo Select to delete any Tempo for all staves for this measure.

Delete Measure command (Edit menu)

Use this command to delete a range of measures in the system. On selecting this command the [Delete Measures dialog box](#) is displayed.

Delete / Insert Measure Dialog / Insert Page Dialog

Delete Measure Dialog

Delete selected measure range.

Measures spin button

Set the total number of measures to be deleted. For example if the current measure selected is measure no. 2 then just setting the value at one will remove this measure 2 from the system, plus all associated notation etc. - Measure 3 will then become measure 2 etc. Setting the value to 10 will remove measures 2 through to 11 - the range that will be deleted is displayed in the caption bar.

OK. and **Cancel pushbuttons**

Insert Measure Dialog

Insert specified number of measures.

Measures spin button

Set the total number of measures to be inserted. For example if the current measure selected is measure no. 2 then just setting the value at one will insert one measure.

The text below the Measures Spin button displays the Current Total of measure numbers for the score, plus the New Total of measure numbers for the score if exiting Dialog via OK

Position

Prior Insert measure(s) prior to current selected measure

After Insert measure(s) after current selected measure

OK. and **Cancel pushbuttons**

Insert Page Dialog

Insert specified number of pages.

Measures spin button

Set the total number of pages to be inserted. For example if the current page selected is page no. 2 then just setting the value at one will insert one page.

Position

Prior Insert page(s) prior to current page

After Insert page(s) after current page

OK. and **Cancel pushbuttons**

Lyrics command (Edit menu)

Use this command to set the lyric editing mode to active. Edit mode is selected so that the lyrics may be input directly into the score on the screen. By de-selecting this to View mode the lyric line is displayed as it will really look when the document is printed. The View mode is the usual setting when not entering lyrics.

Ref.: [Lyrics - overview](#) for further information

Shortcut

Toolbar:

Delete Lyric Line command (Edit menu)

Use this command to delete an entire lyric line - This applies to the whole score - i.e. it deletes the entire lyric line - from the first system to the last system. (If you just wish to delete the lyric line for the system then ensure that you are in [edit mode for lyrics](#) then by holding down the left mouse button mark the lyric text to be deleted - then right click the mouse button and select Cut from the pop-up menu. Ref.: [Lyrics -overview](#) for further information.)

Go To Measure/Page Dialog

Go To desired measure/page.

Measures/Page spin button

Set the destination measure/page and click OK.

OK. and Cancel pushbuttons

View Toolbars command

Use this command to display and hide the various Toolbars, which includes buttons for some of the most common commands in Avrella, such as File Open. On selecting this command the [Toolbars dialog box](#) is displayed from which you may decide upon which toolbars to display.

View Status Bar Command

Use this command to display and hide the Status Bar, which describes the action to be executed by the selected menu item or depressed toolbar button, and keyboard latch state. A check mark appears next to the menu item when the Status Bar is displayed.

See [Status Bar](#) for help on using the status bar.

View Zoom command

Use this command to change the scale of the display. On selecting this command the [Zoom dialog box](#) is displayed.

Shortcut

Toolbar:

View Refresh Display command

On occasion having dragged a note into position or some such similar action, you may find that a trace of the note has been left behind. If this occurs this is due to the respective section of the screen not having been fully redrawn correctly. Using this command will enact a complete refresh operation.

Shortcut

Keys:

CTRL+F

View Volume Graph command

Select this command to view the volume levels for the notation in the score.

The volume graph is presented using the bottom and top staff lines as the minimum and maximum volumes. Thus the bottom staff line represents MIDI volume 0 and the top staff line represents MIDI volume 128. Best illustrated by the example below:

Insert Note command

Insert note into score. The type of note inserted will depend on the current format setting for the [time interval](#) set plus [accidental](#) etc..

The note style may subsequently be changed by use of the [Note property dialog](#); [popup menu](#), as well as changing the pitch by [dragging](#) the note to desired position.

Shortcut

Keys: CTRL+E

Insert Notation command - Clef / Key Signature / Tempo / Time Signature

Option to insert Clef, Key Signature, Tempo and Time Signature notation supplemental to the 'base' notation defined via the [Framework dialog box](#) (Clef, Key, Time) and [Document Setup](#) (Tempo)

Further explanation: On creating a score the 'base' time signature key signature, clefs and tempos are defined. Often these four variables remain unchanged throughout. However the instance arises for which the composer may wish to change the clef , and / or tempo and / or key signature and / or Time signature. It is for this purpose that these commands are included.

Notation TypeDescription

[Clef](#) On selecting this option a [Clef tabbed dialog box](#) is displayed

[Key Signature](#) On selecting this option a [Key Signature tabbed dialog box](#) is displayed

[Tempo](#) On selecting this option a [Tempo dialog box](#) is displayed

[Time Signature](#) On selecting this option a [Time Signature tabbed dialog box](#) is displayed

Note: You may subsequently delete any [Tempo](#), [Clef](#), [Key Signatures](#) inserted via the [Pull Right Menu](#)

Rest command (Insert menu)

Insert rest into score. The type of note inserted will depend on the current format setting for the [time interval](#) set plus [dots](#)

The rest style may subsequently be changed by use of the [Rest property dialog](#).

Lyric Line command (Insert Menu)

Use this command to insert a lyric line into the score. To insert a lyric line, position the cursor below the staff on the first page and system for which the Lyric line is required. On selecting this command the [Insert Lyric Line dialog box](#) is displayed.

Notes: Insertion of a lyric line is very much like including a new staff in the system framework - i.e. the lyric line is effective over the whole score, though of course on initial entry it is blank, and you choose just where to place the lyric text. To emphasise that the lyric line is effectively part of the framework - lyric lines may only be inserted when the cursor is below the appropriate staff on System 1

Text command (Insert Menu)

Use this command to insert a text into the score. On selecting this command the [Insert Text Tabbed dialog](#) is displayed.

Measure(s) command (Insert Menu)

Use this command to insert a range of measures in the system. On selecting this command the [Insert Measures dialog box](#) is displayed.

Tuplet command (Format Menu)

Set entry mode to tuplet..

Shortcut

Toolbar:

Tuplet Ratio Dialog

The Tuplet ratio dialog permits selection of standard [tuplet](#) types, once having selected [tuplet command](#)

Type

[Triplet through to Septolet](#)
[radio buttons](#)

Sets the appropriate tuplet type.

[Include number checkbox](#)

Select to display the number adjacent to tuplet(default)

[Explicit Ratio checkbox](#)

If display number, select to display the explicit ratio. E.g. if triplet instead of displaying '3' display '3:.

OK. and [Cancel pushbuttons](#)

Lyric command (Format Menu)

Displays [Lyric Format Dialog](#) so that character format for selected lyric line may be set.

Record command (Tools menu)

Currently record facility from a Midi keyboard is not supported. However this is to be implemented in a future 1.xx release of Avrella. Although by use of a Midi sequencer you may record a Midi file and then import the generated Midi file into Avrella. A recommended Midi sequencer is Jazz++ freely available from www.jazzware.com

Play command (Tools menu)

Starts playing of the current score (which has the input focus) through the PC sound card.

Shortcuts

Toolbar:

Pause command (Tools menu)

Pauses the playing of the current score (once started).

Shortcuts

Toolbar:

Note: On selecting Pause the menu option then displays 'Continue'. Once play resumed the menu option reverts to 'Pause'

Stop command (Tools menu)

Stops the playing of the current score (once started).

Shortcuts

Toolbar:

Volume command (Tools menu)

Use this command to set the volume for a range of measures for the selected staff. On selecting this command the [Set Volume for Measure Range Dialog](#) is displayed.

Options command (Tools menu)

Use this command allows set up various options for Avrella. via the tabbed dialog with the following Pages:

[General](#)

[Display](#)

[MIDI Out](#)

[Status Bar](#)

[Guitar](#)

[Misc.](#)

Insert Page (Score menu)

Use this command to insert a page(s) into the score. On selecting this command the [Insert Pages dialog box](#) is displayed.

Tip of the Day command (Help menu)

Use this command to display the [Tip of the Day Dialog](#)

Properties - General Sheet

Displays general properties for selected note / chord / rest

Accidental*

Double sharp to
Double flat radio
buttons

Select the appropriate [accidental](#) type required. (Note: There is an alternative short cut (for notes, not chords) for this operation - without use of Properties Dialog highlight note head (line up cursor with head) and press S. (F - flat, N - natural, O - off))

Bracket checkbox

Bracket the [accidental](#) - typically for case where [Key Signature](#) indicates that note is of this [accidental](#) type, but the composer just wishes to re-emphasise the state.

* disabled for rest

Time Interval

Semibreve (whole) through to Hemidemisemi-quaver
(sixty-fourth) radio buttons

Select the appropriate note /rest
[time interval](#) required.

Dots

None through to
double dots radio
buttons

One [dot](#) lengthens the time interval by half the value of the original note or rest. Two [dots](#) lengthens the time interval by three quarters the value of the original note or rest.

Tie*

Tie note to left hand note (<-) or tie note to right hand note(->) radio buttons Tie note to preceding or following note. (Must be set up for both notes concerned.)

* disabled for rest

Vol.

Use this control to set the selected note / chord to desired midi volume. (1 through to 127.)

spin control (Note: There is an alternative short cut for this operation - without use of Properties Dialog highlight note head (line up cursor with head) and Ctrl + u to increase and Ctrl + d to decrease volume by 1. Use upper case U & D to increase / decrease by steps of 10. i.e. Ctrl + U to increase and Ctrl + D to decrease volume by 10.)

Properties - Style Sheet

Displays style properties for selected note / chord.

Tail

Up / Down
radio
buttons

Set the tail direction to point up or down. (Note: There is an alternative short cut for this operation - without use of Properties Dialog - highlight note head - click on mouse right hand button to display popup menu and then select 'flip tail'.

Beam

Beam note to left hand note (<-) or Beam note to preceding or following note. (Given beam note to right allowable time interval for note value.)

Parentheses

Paren. checkbox Brackets the note to indicate optional note.

Note head

Standard through to triangular radio buttons Select non standard head type.

Properties - Ornamentation

Displays main ornamentation properties for selected note.

Duration

Include Include duration marking as defined by radio buttons below.

Staccato radio button Display **Staccato**

Staccato + dash radio button Display mezzo staccato

Staccatissimo radio button Display **Staccatissimo**

Dash radio button Display **dash**

Mordent

Include Display **Mordent**

Lower checkbox Define style as lower.

Double checkbox Define **Mordent** style as double.

Beam repeat (Note: Beam repeat disabled for eight notes and less.)

Include Include beam repeat marks.

Radio buttons 1
- 4 Set marks 1 to 4

Style push- Select to display Beam Repeat Style dialog box which may be used to add

button a tremolo symbol etc.

Accent

Include Include **accent symbol**.

Horiz, Display **accent symbol** horizontally.

Trill

Include Include.

Style push-button Select to display **Trill Style dialog** box which may be used to further define trill style.

Turn

Include Include.

Style push-button Select to display Turn style dialog box which may be used to further define turn style.

.

Properties - Ornamentation #2

Displays extended ornamentation properties for selected note.

Grace Note

Include Include [grace note](#).

Style push-button Select to display [Grace Note Style dialog box](#).

X offset Set the horizontal distance between grace note and associate note.

Default push-button Sets default X position median plus proportional.

Proportional Set for spacing between the grace note and associate note to remain proportional - dependant on the measure width. Consequently the grace note will be drawn closer to the associate note as the measure width is reduced - opposite if you increase the measure width. Not setting this checkbox results in the space being the same whatever the measure width.

Properties - Tablature - Note

Defines tablature display for stringed instrument - typically guitar / bass guitar.

Checkbox

Associate* Selection links the note with the tab figure in the tab staff below.

Auto update Select to automatically update tab figure when moving note etc.

Optional () Brackets the tab figure.

* Note that the tab figure displayed is shown for regular tuning and it also depends on whether or not the Standard checkbox in **Tools -> Options -> Guitar** has been selected so that the tab entry treats the notation entered as an octave higher. (Guitar music notation is virtually always written an octave higher than it sounds.)

Manual entry Used when Auto update not selected - for manual control of string / fret no.

String Adjust for String position 1->6

Fret No. Adjust for Fret position 0->24

Fret Median Used when Auto update selected.

Spin Control Adjust so that may specify the fret 'median' so that the note is placed in the appropriate section of the fretboard - e.g. If set to 5 will select fret range 3 to 7 (assuming note not at high or low end).

Properties - Chord Diagram

Allows the set up of a chord diagram.

The following are common to both the Chord Properties Tab and the Chord Diagram (Guitar Palette Tool)

(Edit) Title... push button

Select this to enter or modify the chord diagram title. On selecting this push button the **Chord Title dialog box** is displayed. Having entered the chord title; on closing the dialog box via the **OK** pushbutton the chord title is displayed above the chord diagram.

Miniature barre buttons

There are 6 barre buttons each one above a guitar string. Their purpose is for drawing a barre for the chord diagram. Only 2 buttons may be selected at a time to represent the start point and end point of the barre. If there are any open string markers set then the barre will not be drawn.

Picture Box displaying chord diagram

The picture box displays how the chord diagram will appear in the score. To put in finger position markers, ensure that the finger marker is selected, then line up the cursor on the appropriate string and fret position and click the left hand mouse button - a finger position will now be drawn on the appropriate string and fret position that you clicked on. To insert (for example) a barre for the chord from the 6th string to the first string, press the miniature button above the 6th string and then the miniature button above the first string. Provided that no open strings are marked a barre will be drawn from the 6th string to the 1st string.

Marker

{The file
'C:\Data\hg\AIT\Libraries\...\Dev\Avrella\res\dlg_circ.bmp'
could not be found.}

Allows selection of appropriate tool for marking chord diagram.

Select the finger position marker tool for inserting a finger position in the chord diagram.

{The file
'C:\Data\hg\AIT\Libraries\..\Dev\Avrella\res\dlg_cros.bmp'
could not be found.}

Select the position cross marker tool for inserting a cross position in the chord diagram.

{The file
'C:\Data\hg\AIT\Libraries\..\Dev\Avrella\res\dlgeras.bmp'
could not be found.}

Select the erase marker tool for deleting a finger position or cross marking in the chord diagram - for the case where no marking is on the string at all (Note: If you merely wish to move the finger position marking from e.g. 1st to 2nd fret, then merely click on 2nd fret position with the finger position marker tool.

[Show fret number checkbox](#) Displays fret number alongside chord diagram.

[Font fret no... Button](#) Select this button to set up the font settings for the fret number. On selecting this button a [Font dialog box](#) is displayed

The following are only included with Chord Properties Tab:

[Associate chord diagram checkbox](#) Associates chord diagram with notation.

[Fret number spinbutton](#) Set the fret number for the chord diagram diagram.

[Hide checkbox](#) Do not display the chord diagram in the score - for situations where you may wish to print out without chord diagram, but still retain the chord diagram data that you have entered.

X-Y offset

[Zero push button](#) Centres X and Y slider controls.

[X \(horizontal\)slider control](#) Moves chord diagram diagram in the X axis.

[Y \(horizontal\)slider control](#) Moves chord diagram diagram in the Y axis.

Example

Entering A major (6 string barre) at 5th fret of the chord diagram. If selected via Chord Properties ensure that Associate diagram checkbox is set and that the chord notation is highlighted (has the cyan box around it as well as the notes being highlighted). Click on Show fret no. checkbox and set fret no. to 5. Select finger position marker tool ({"The file 'C:\Data\hg\AIT\Libraries\...\Dev\Avrella\res\dlg_circ.bmp' could not be found.}) and place the arrow over the 6th string, 5th fret position and right click the mouse. Repeat for 5th string 7th fret, 4th string 7th fret, 3rd string 6th fret, 2nd string 5th fret and 1st string 5th fret. Having drawn the marker positions for the chord, insert a barre. Click the miniature barre button above the 6th string and then click the miniature barre button above the 1st string. Now enter the chord title. Select Title button, type in A maj. and select OK.

Note: In this example for the score a tablature staff is below the musical notation staff - thus the Tab property page is also displayed.

Properties - Tablature - Chord

Defines tablature display for stringed instrument - typically guitar / bass guitar.

Checkbox

Associate Selection links the chord notes with the tab numbers in the tab staff below.

Manual entry Enabled when associate check box is set. There is no auto update for chords, thus these controls are used to specify: Whether to include a marking for this string, and if so the string / fret number.

Include Set to include tab marking for this string. If not set String, Fret No. and optional controls are disabled.

String Adjust for String position 1->6.

Fret No. Adjust for Fret position 0->24.

Optional () Brackets the tab figure.

Object classification

This table lists all the type of objects which can be inserted / deleted / copied etc. into a score.

Object Type	Object Family	Comments
Note	Notation	
Rest	Notation	
Chord	Notation	
Vibrato / Wide Vibrato / Vibrato + wang bar	Mark	
Slur / Free slur	Mark	
3 point line	Mark	
Line	Mark	
Crescendo	Mark	
Decrescendo	Mark	
Bracket (Horizontal)	Mark	
Accent	Mark	
Bend - Slope	Mark	
Bend - Straight	Mark	
Bend and Release	Mark	
Bend - >Hold and Release	Mark	

Hammer/Pull	Mark
Chord	Chord (non associate)
Accidental	Notation (non associate)
Mordent	Notation (non associate)
Pause	Notation (non associate)
Grace	Notation (non associate)
Turn	Notation (non associate)
Custom	Notation (non associate)
Text	Text
TextTab	TextTab (non associate)
Lyric	Lyric

Where non associate is put in brackets - this is to indicate that the object is independent of a Note / Chord. It is strongly recommended that where possible the appropriate object be selected by association with the relevant notation by use of the [Properties Dialogs for Objects](#).

Status Bar Page

The Status Bar Page allows set up of options on the Status Bar.

[X Ratio](#) Display [X Ratio](#) for highlighted object in status bar

[Volume](#) Display [Midi volume](#) for highlighted note in status bar

Measures per System Dialog

Define the measures for selected system(s)

Measures spin button

Set the number of measures for the selected system(s)

Range Group Box

This system only. Start measure = n Select to define just this selected system. 'n' is the measure no. for which the system starts.

This system onwards Select to define this selected system plus all those following to the end of the score.

All systems Select to define all systems in the score.

OK. and **Cancel pushbuttons**

Tempo Dialog

The Tempo dialog allows the selection of the type of **tempo** indication to be inserted into the score. Controls shown in **red** are only applicable for the 'Initial Tempo Setting for Document' (Accessed through File -> Document Setup, then selecting Tempo Button).

Time Interval

Whole (Semibreve) through to Eighth(Quaver) radio buttons Sets the appropriate note value association

Dot checkbox Add **dot** to note value.

Beats per minute spinbutton Set beats per minute associated with selected note value

Hide

Check to hide the initial Tempo setting from the display and print output (Default behaviour).

Display only

Check to display **tempo** only - and not to print out. On selecting this checkbox the **Tempo** symbol will be shown on the screen by the colour to the right of this check box. On selecting Display only the colour of the text Font is set to the 'Display Only' colour. Conversely on de-selecting Display Only the colour of the text Font is set to black. (Ref.: Display Only colour button below for changing the display colour)

Use

parentheses

Check to display **tempo** in parentheses (brackets).

Font Button Select this button to set up the font settings for the **tempo** number. On selecting this button a **Font dialog box** is displayed

Display Only Colour Button Select this button to set up the colour for a clear indication that the tempo is set as display only - and will not be printed out

Default Button Select this button to set the default settings.

Offsets

Vertical The default vertical offset for the initial tempo position is set as 6 half **staffline space units**. above the top of the first staff.

Horizontal The default horizontal offset for the initial **tempo** position is set at the 'true' start of the initial measure (Note that there is an allowance for the first measure of a staff to accommodate Clef etc.) The tempo can be offset in the range from -40 to 50 as a ratio of the width of the measure. Default is set as 0.

OK. and **Cancel** pushbuttons

Default Midi Volume for Staff / New Document Dialog

Midi Volume

Dialog Caption

spin control	Default Midi Volume for Staff:	Sets the default midi volume (1 through to 127) for note entry for the selected staff.
	Default Midi Volume for new Document:	Sets the default midi volume for note entry when creating a new document. (All Default Midi Volume for Staff values will be set to this value on creating a new document.)

OK. and Cancel **pushbuttons**

Layout Tab

Used to override global settings in [Document Setup tabbed dialog box](#) (Accent Proportional) and [Framework Dialog Box](#) (staff links) for this selected measure.

Accent Proportional	For any accent associated with a note - if this checkbox is set then the spacing between the accent and the note will remain proportional - dependant on the measure width. Consequently the accent will be drawn closer to the note as the measure width is reduced - opposite if you increase the measure width. Not setting this checkbox results in the space being the same whatever the measure width.
LH staff links	Draws the left hand measure line through from the first staff to the last staff in the system.
Staff No. spin button	Used to select staff number below which link may be set / cleared.
Link to staff below checkbox	Sets / clears link between staff no. as set by spin button and staff below.
Set all linked pushbutton	Sets all links between staffs (disabled if all are already set).
Clear all linked pushbutton	Clears all links between staffs (disabled if all are already cleared).
RH staff links	Functionality is the same as for LH staff links except acts on RH staff links.

Composition Details Tab

The Composition Details allows set up of score composition information such as Composition Title, Author etc.

Composition Title

Enter the composition title to appear on the first page at the head of the document. Two lines provided.

Composer

Enter the details of the composer to appear on the first page at the head of the document. Two lines provided.

Copyright

Enter the details of any copyright information to appear on the first page at the head of the document. Three lines provided.

Additional Information

Enter details of any additional information relating to this composition - this information is just for notes, comments etc. that you might have - it is not displayed anywhere on the score,

Font Button

Select this button to set up the font settings for the appropriate details. When the cursor is in the composition title edit boxes, the button will display Font Title - indicating that selecting the font button will determine the font that is used just for the Composition Title. On selecting this button a [Font dialog box](#) is displayed

Justification Sets selected composition title, composer or copyright to the justification as defined

Left Sets left justification.

Centre Sets centre justification.

Right

Sets right justification.

Header / Footer Tab

*** Note - For Footer tab help - read footer instead of header. The operation of Footer Tab is identical to that of header - except of course that the information set up is displayed at the foot of the page.**

Allows set up of header information

Header upper/lower line

Enter header details that will appear at the top of each document page.

Font Button

Select this button to set up the font settings for the header. On selecting this button a [Font dialog box](#) is displayed

Justification

[Left](#) Sets left justification.

[Centre](#) Sets centre justification.

[Right](#) Sets right justification.

Output First Page checkbox

Normally header information is not output for the first page. Selecting this checkbox will override this and output the header information for the first page.

Print for pages where system exceeds one page checkbox

In the case where there are more staffs in the system than can fit on the printed page, setting this checkbox will print out the header details at the top of the first staff of the next page for the continuation of the system printout.

Output codes

Various codes can be inserted into the header information for the incorporation of page number etc. These codes are detailed below:

Code Definition

^P Current document page.

Current print page. In the case where there are more staffs in the system than can fit on the printed page, this defines the actual printed page. For example if there are 20 staffs in the system, and printing just the second system outputs 3 pages then the document page output(^P) will display 2, whereas ^p will display 4 - indicating the actual print page.

^T System time - as determined by the clock setting on your computer.

^D System date - as determined by the clock setting on your computer.

^t File time.

^d File date.

^S Staff system number - as determined by the first system number for the page.

Music Sheet Framework Dialog

This dialog box is for the setting of the basic score layout.

Picture Box on left hand side of dialog

As staves are entered/modified in this dialog an approximate representation of the score layout for the system is drawn here. The active staff (as highlighted in the List box) will be displayed with black staff lines. Non active staves with white staff lines. Any newly inserted staff entered using the Insert pushbutton is displayed with red staff lines.

List Box on right hand side of dialog

Describes Staff characteristics

Type Type of staff: Regular Staff 'Staff', Tab (Guitar), Tab (Bass)

Title Name of staff

Ch MIDI channel

P Patch No.(MIDI)

Mute Mute.

Staff

**Insert
push
button**

Allows insertion of a staff. On selecting this option a [Staff Type dialog box](#) is displayed. There is a choice of selecting Standard (Regular) type staff, Tab (Guitar) staff or Tab (Bass) staff. Having selected the staff type and exiting the [Staff Type dialog box](#) via OK the new staff will be displayed below the position of the staff currently highlighted in the list box. The new staff will be drawn in red to indicate that this is a new entry.

Delete

push button Allows deletion of currently highlighted staff.

Edit push button Allows editing of MIDI and staff name characteristics as displayed in the list box. On selecting this option an **Instrument Details dialog box** is displayed. **Shortcut** - Left double click mouse button when on respective staff in listbox.

Show staff titles > sys 1 checkbox Displays staff titles past the first system. (Note: In the **Instrument Details Dialog** you have the option of entering a title with a shortened version by use of ^n. E.g. "Guitar^nGtr." - will display Guitar for the first system and "Gtr." for subsequent systems.

Bracket (curly) with lower staff checkbox Bracket (curly / brace) selected staff with the staff below.

Bracket (straight) with lower staff checkbox Bracket (straight) selected staff with the staff number set in spin box control..

Clear all Clears all brackets settings from the framework.

Link staff status

Text display All linked / None linked / Some linked.

Set all linked push button Sets all links between staffs (disabled if all are already set) for whole score.

Clear all linked push Clears all links between staffs (disabled if all are already cleared)

button

for whole score.

Initial Clef Type

Treble, Bass, Alto and Tenor radio buttons

Having selected the desired staff in the list box, the radio button displays the initial clef type for this staff, as well as showing the clef type for the selected staff in the picture box on the left hand side of the dialog. The initial clef for the selected staff may be changed by selected the appropriate radio button.

Note: Having selected the initial clef type, a subsequent clef type may be inserted later on in the score for this staff via [Insert->Notation->Clef](#) menu option.

8va checkbox

If a treble or bass clef is selected, then an 8va symbol may be attached to the clef to indicate that the notes displayed are an octave above or below, dependant on whether the '8' is above or below the clef symbol. This option is only for treble and bass clefs.

{The file

'C:\Data\hg\AIT\Libraries\...\Dev\Avrella\res\dlguparrow.bmp' could not be found.} and **{The file**

'C:\Data\hg\AIT\Libraries\...\Dev\Avrella\res\dlgdownarrow.bmp' could not be found.}

radio buttons

{The file

'C:\Data\hg\AIT\Libraries\...\Dev\Avrella\res\dlguparrow.bmp' could not be found.} sets treble or bass clef type to display an 8 above the symbol - indicating an octave above.

{The file

'C:\Data\hg\AIT\Libraries\...\Dev\Avrella\res\dlgdownarrow.bmp' could not be found.}
sets treble or bass clef type to display an 8
below the symbol - indicating an octave
below.

Initial Signatures

Key push button Allows selection of initial key signature for the score. On selecting this option a **Key Signature tabbed dialog box** is displayed

Time push button Allows selection of initial time signature for the score. On selecting this option a **Time Signature tabbed dialog box** is displayed

The current key and time signatures are shown within the Initial signatures group box.

OK. and **Cancel pushbuttons**

Bar Markings Tab

Allows various bar markings to the measure to be made.

Double Mark the end/start of measure border as a double bar, to indicate change of time signature or similar.

Section Mark the outer bar of a double bar wider. Typically to indicate conclusion etc.

Repeat Dots Include repeat dots.

Repeat previous bar Inserts repeat symbol to indicate - repeat previous bar

Set as last measure Sets this measure as the last in the score (enabled only for last page)

End Line

Check Box Select to display the **end line marking** above the staff.

Distance from staff spin button Sets the distance from staff in units of half staffline line spaces.

To measure No. Set the measure number from the current measure that the Ottava marking is to apply to.

Edit box for end line Insert text associated with end line, typically 1. , 2. etc.

Ottava(8va) Tab

Allows [Ottava](#) plus generic markings to be inserted above / below staff.

Position

Upper	Display the 8va marking above the staff.
Distance from staff spin button	Sets the distance from staff in units of half staffline line spaces.
Lower	Display the 8va marking below the staff.
To measure No.	Set the measure number from the current measure that the Ottava marking is to apply to.

Style

8va/ 8/15ma/15 combo select	Set text marking at start of line as '8va' / '8' / '15ma' / '15'
bassa	For case where lower selected append 'bassa' to text marking.
solid	Set the line to solid rather than default dashed.

Generic

[Generic](#) Select to enter generic text rather than standard 8, 8va etc.

[Edit box for Generic text](#) Generic text edit field.

[LHS spinbutton](#) Set the start position (as a % of the measure width).

[RHS spinbutton](#) Set the end position (as a % of the measure width).

Note Values

SymbolName	Common name	Rest Symbol
Breve	Double whole-note	..
Semibreve	Whole-note	.
Minim	half-note	..
Crochet	quarter-note	.
Quaver	eighth-note	..
Semiquaver	sixteenth-note	..
Demisemiquaver	thirty-second-note	..
Hemidemisemiquaver	sixty-fourth-note	..

Change of Volume Table

Italian	English	French	German
crescendo	growing louder	en croissant	wachsend
decrescendo (diminuendo)	growing softer	diminuer	diminuieren, vermindern
forte piano (fp)	Not translated - commence note loud, dropping to soft immediately.		
sforzando , sforzato(sf, fz, sfz)	Not translated - forced, accented.		
piu, meno, non troppo	Defined in Tempo table , also used for volume		

Book Antiqua Bold Italic seems to be the best common Windows font for indicating the symbols in brackets.

Often instead of [crescendo](#) the symbol is used instead

Likewise for [decrescendo](#):

The symbols are selected via the [Standard Palette](#)

Tempo Table

Italian	English	French	German
Adagio	Not translated - usually means 'slow'.		
Allegretto	Not translated - less fast than Allegro		
Allegro	Fast	Animé, Vite	Schnell
Andante	Medium Slow	Allant	Gehend
Andantino	Not translated - less slow than Andante		
Grave	Heavy, Serious	Lourd	Schwer
Larghetto	Not translated - not as broad as Largo		
Largo	Broad	Large	Breit
Lento	Slow	Lent	Langsam
Moderato	Moderate	Modéré	Mässig
non troppo	not too (fast, slow etc.)	pas trop	nicht zu
Prestissimo	Not translated - faster than Presto		
Presto	Very fast	Très vite	Sehr schnell, Eilig
Vivace	Lively	Vif	Lebhaft
Vivacissimo	Not translated - livelier than Vivace		

Text Entry Tab

Allows entry of text into the score.

Edit Box

Where custom text entry has been selected, use this edit box to input the text.

Type	Sets the type of text predefined: Tempo, Volume etc. or Custom.
Custom	Permits entry of custom specific text via Edit box.
Tempo	Enter standard tempo term as selected via combo box.
Change of Tempo	Enter standard change of tempo term as selected via combo box.
Volume	Enter standard volume term as selected via combo box.
Change of Volume	Enter standard change of volume term as selected via combo box.
Tempo	Enter standard tempo term as selected via combo box.
Simultaneous reduction of tempo and volume	Enter standard term as selected via combo box.
Mood, Degree, Intensity or Style	Enter standard term as selected via combo box.
Language	Sets the required language for the term.

Italian Use the Italian term.

English Use the English term.

French Use the French term.

German Use the German term.

Abbreviation(Italian) Abbreviate the Italian term.

Sort Checkbox

Sorts alphabetically the terms.

Note: If you require to use the dialog as a means of translation between the terms, do not select the Sort checkbox.

Diatonic Scale

The Diatonic Scales are those of the major and minor [keys](#). Ref.: [Scale](#)

Bibliography

The following is a selected list of books that should help the music student further advance their understanding of music notation:

Title	Author	Publisher	ISBN	Comments
Music Notation	Gardner Read	Taplinger Publishing Co.	0800854535	An often recommended book
Learn to Read Music	Howard Shanet	Simon & Schuster	0671210270	Good introduction to the fundamentals of learning to read music
Music Notation in the Twentieth Century: A Practical Guidebook	Kurt Stone	W W Norton & Co	0393950530	Many consider this to be the best book on music notation
Music Manuscript Preparation	Mona Mender	Scarecrow Press	0810822946	
The AB Guide to Music Theory Vol 1	Eric Taylor	Associated Board of the Royal Schools of Music	1854724460	
The AB Guide to Music Theory Vol 2	Eric Taylor	Associated Board of the Royal Schools of Music	1854724479	

Further details and ordering etc. may be found at online book stores such as www.amazon.com etc.

Scales - Just and Equal Tempered compared

Just Scale

A Just scale is a natural scale based on intervals that can be expressed as an integral fraction.* The scale produces cleaner and more pleasing intervals compared to the equal tempered scale. The disadvantage of a Just scale is that it is based round the key you are playing in. So the tuning for a Just scale for C Major is different to that for D Major.

* Fraction using integer (whole) numbers e.g. $5/2$. Opposed to decimal numbers such as 5.4, 2.67 etc.

Equal Tempered Scale

The equal tempered scale was developed as a compromise for keyboard instruments in order that a composition in any key could be played without having to retune the instrument. This scale uses constant frequency multiples between the notes.

To compare the equal tempered scale wiith the Just scale, it is probably best illustrated by the table below which compares the tuning for a Just scale for C verses that for an equal tempered scale for C. (Based on Middle C frequency of 261.62Hz.)

Note	Just tuning ratio	Frequency (Hz.) – (rounded to 1st decimal place)	Equal tempered tuning ratio (rounded to 4th decimal place)	Frequency (Hz.) – (rounded to 1st decimal place)
Middle C		261.6 (Note 1)		
D	9/8	294.3	1.1225	293.7
E	5/4	327.0	1.2599	329.6
F	4/3	348.8	1.3348	349.2
G	3/2	392.4	1.4983	392.0
A	5/3	436.0	1.6818	440.0

B 17/9 494.2 1.8877 493.9

$\sqrt[12]{2}$ (12th root of 2 approx. 1.05946309436) represents the frequency ratio between any two consecutive notes in a chromatic scale of equal temperament. E.g. For the equal tempered scale for middle C (frequency 261.62Hz), the frequency of C# is 277.18.

Note 1: 261.62 is the figure used for the calculations in the above table.

1, 2, ... command (Window menu)

Avrella displays a list of currently open document windows at the bottom of the Window menu. A check mark appears in front of the document name of the active window. Choose a document from this list to make its window active.

File Save As dialog box

The following options allow you to specify the name and location of the file you're about to save:

Save In Select a folder to save the file in. You can select network paths, computers, drives, directories, and folders.

File Name Type the new filename for this file.

Note: If you type a pattern using a wildcard (* or ?) in the File Name box and press ENTER, the list box displays files matching that pattern in the selected folder.

Save As Type Select a file type from the drop-down list box. The filename extension determines the file type of the saved file. Default is *.avrella

Save Saves the designated file.

Standard Save / Save As

OK. and **Cancel pushbuttons**

Print dialog box

The following options allow you to specify how the document should be printed:

Printer

This is the active printer and printer connection. Choose the Setup option to change the printer and printer connection.

Setup

Displays a Print Setup dialog box, so you can select a printer and printer connection.

Print Range

Specify the pages you want to print:

All Prints the entire document.

Selection Prints the currently selected text.

Pages Prints the range of pages you specify in the From and To boxes.

Copies

Specify the number of copies you want to print for the above page range.

Collate Copies

Prints copies in page number order, instead of separated multiple copies of each page.

Print Quality

Select the quality of the printing. Generally, lower quality printing takes less time to produce.

Print Preview Toolbar

The print preview toolbar offers you the following options:

Print

Bring up the print dialog box, to start a print job.

Next Page

Preview the next printed page.

Prev Page

Preview the previous printed page.

One Page / Two Page

Preview one or two printed pages at a time.

Zoom In

Take a closer look at the printed page.

Zoom Out

Take a larger look at the printed page.

Close

Return from print preview to the editing window.

Status Bar

The status bar is displayed at the bottom of the Avrella window. To display or hide the status bar, use the Status Bar command in the View menu.

The left area of the status bar describes actions of menu items as you use the arrow keys to navigate through menus. This area similarly shows messages that describe the actions of toolbar buttons as you depress them, before releasing them.

The next area displays the current page number, plus the page number against the total page number, plus also the current measure number. Format: Page n n/t Meas:m

- where current n is the current page, t total pages and current measure is m

The right areas of the status bar indicate which of the following keys are latched down:

Indicator Description

CAP The Caps Lock key is latched down.

NUM The Num Lock key is latched down.

SCRL The Scroll Lock key is latched down.

Also the [Midi Volume](#)* and [X Ratio](#)* are displayed to the right if they have been selected via [Tools->Options->Status Bar Tab](#)

* For notes and rests when notation highlighted

Lyrics - overview

Lyrics may easily be inserted into the score and edited on screen.

Having [inserted a Lyric Line](#) and ensuring that the Lyric edit / view is selected to [edit](#) just enter the lyrics direct into the document. When the lyric line is in edit mode the format of the lyric text may be changed via [Format -> Lyric menu option](#).

[A brief guide to creating lyrics for your score and setting them up to your liking.](#)

Toolbars Dialog

Select desired toolbars for display:

The toolbars are displayed across the top of the application window, below the menu bar.

The toolbars provide quick access to many tools used in Avrella.

Toolbar name	Description
Standard	General functions File Open, Save etc.
Notes	Specific to notation.
Navigation	Navigating round score - Go To Page etc.
Format and Presentation	Score layout and style
Playback	Playback score
Tablature	Specific to guitar tablature

OK. and [Cancel](#) **pushbuttons**

Zoom Dialog

Select desired scale for the display:

OK. and Cancel pushbuttons

File Framework command - clef

Allows the set up of clef.by use of the [Clef. tab.](#)

Key Signature tabbed dialog

Allows the set up of the key signature. It may be set up as a standard key signature or a custom key signature by use of the [Standard.](#) or [Custom.](#) **tabs.**

Time Signature - tabbed dialog

Allows the set up of the time signature via the tabbed dialogs [General.](#) and [Font](#)

Insert Lyric Dialog

This dialog displays a series of radio buttons representing the 4 possible lyric lines that may be inserted. Select the appropriate lyric line that is required to be inserted into the score.

Radio button

Lyric Lines 1 Select the lyric line that is desired - any lyric line number that has already
- 4 been inserted will be greyed out.

Notes: Insertion of a lyric line is very much like including a new staff in the system framework - i.e. the lyric line is effective over the whole score, though of course on initial entry it is blank, and you choose just where to place the lyric text. To emphasise that the lyric line is effectively part of the framework - lyric lines may only be inserted when the cursor is below the appropriate staff on System 1

OK. and **Cancel pushbuttons**

Text Tab Dialog

Allows the insertion of text into the score. A tabbed dialog is displayed whereby you may enter the text via [Text Entry](#). and define the text style via [Text Style](#). **tabs**.

Set Volume for Measure Range for Staff Dialog

Increase / Decrease Select if the volume is to be increased / decreased over the selected range.

not selected: Sets the Midi Volume (1 through to 127) for the notation in the selected measure range for the staff.

selected: Sets the *Start* Midi Volume (1 through to 127) for the notation in the selected measure range for the staff.

(Start) Midi Volume

spin control

End Midi Volume Enabled if Increase / Decrease selected.

spin control Set the End Midi Volume (1 through to 127) for the notation in the selected measure range (set below) for the staff.

Measure Range

All Specifies all notation for the measures for the staff to be set to the Midi Volume specified above.

Select Range Specifies the measure range for the selected staff for which the notation will be set to the Midi Volume specified above.

Note: To achieve a desirable decrease / increase in volume over a measure range each volume is calculated based on the following:

$$\text{vol} = \text{start_vol} - ((\text{running_tm_prd} / \text{meas_range_tm_prd}) * \text{vol_diff})$$

where:

running_tm_prd time period from start of measure range to this note + mid time period of the note.

meas_range_tm_prd total time period over selected measure range

start_vol Start midi volume

end_vol End midi volume

vol_diff start_vol - end_volume

Thus to take an extreme example if setting measure range for 1 measure which just contains a whole note (4/4 time) and the start volume is set at 70 and the end volume is set at 50, the single whole note will be set at the median: 60.

OK. and **Cancel pushbuttons**

General Page

The General Page allows set up of overall options applicable to operation of Avrella.

Note Entry	Sets conditions / rules for general note entry.
Auto Format	Set so that on entry of notes the position of the note is placed in the x position, so that its position from the prior note and / or the trailing note is such that it is evenly spaced depending on its time period with relation to the other notes in the measure. With this set, for note entry into a measure a check is carried out to ensure that the note entry does not cause an 'overflow' for the measure. For example (4/4 time) on entering 4 1/4 notes, on entering a 5th 1/4 note, a warning message box will be displayed, stating that the maximum number of notes / rests have already been entered for time signature 4/4. You have the option to override by selecting 'Yes' or cancel by selecting 'No'.
Validate Time Interval (always set when Auto Format set)	
Auto Beam	On note entry appropriate notes will be beamed to suit the time signature. For example (4/4 time) on entering 2 1/8 notes, these will be beamed together.
Mid Line Tail down	Set so that note tail points downwards on entry on mid line of staff otherwise up.

Cursor Type Specify the cursor type to be displayed.

Arrow Standard arrow type cursor

I-Beam I-Beam type cursor as commonly used in Word processing programs..

Tip of the Day Specify the level of tips to be shown if **Tip of the Day** option is selected.

Beginner Beginner level.

Advanced Advanced level.

Sticky Specify whether buttons selected remain selected after each note entry. E.g. Typically with selecting a single dot on entering a note, the next note will not require a single dot. Thus if Sticky Dots is not selected (installation default) on entering the single dot note, the single dot button will switch off after the note entry.

Accidentals Select if you wish the selected accidental button to remain persistent after each note entry.

Dots Select if you wish the selected dot button to remain persistent after each note entry

Drag Delay Set delay in milliseconds after having clicked on an object before you are able to drag the object (if draggable).

[Prevents accidental movement of object on initial selection. Range setting 100 - 1200 ms. Spin control set to 10ms steps.]

Help Level Sets the level of help support in the application.

Display warning Shows warning message boxes that are displayed typically when a major irreversible operation is about to be carried out. Typically a beginner may not be aware of the exact consequences of this operation. However a more

message boxes experienced user will be aware, and will thus not wish to be bothered by such warning messages.

Display tutorial
message boxes
and notes Shows tutorial message boxes to aid the new user plus also tutorial notes - displayed on dialog boxes.

Display Page

The Display Page allows set up of colour association on screen for the presentation of the score.

Tablature

Associate Tab - blue - Select to display any tablature numbers as blue that are associated with the note in the staff above.

Active Note

/ Symbol

Set Set so that on selecting any note or symbol, mark etc. (i.e. by clicking the mouse on that symbol - then the appropriate symbol is displayed in the colour as shown in the colour picture box.

Colour Select this button to set up the color for the active note or symbol, mark etc. On selecting this button a **Color dialog box** is displayed.

Colour Picture box Displays current colour selected.

Standard Notation Colour Note: Basically this is used for the case where two instruments are notated on the same staff, and it can be useful therefore to have the two instruments notation in different colours so that there is no confusion. Refer to **Notating two voices on the same staff**.

Primary Colour Select this button to set up the color for the notation for the first

(Default is black) instrument. On selecting this button a [Color dialog box](#) is displayed.

[Secondary](#)

[Colour](#)

(Default is cyan)

Select this button to set up the color for the notation for the second instrument. On selecting this button a [Color dialog box](#) is displayed.

[Secondary print output - as primary.](#)

Select so that for the printed output, the secondary notation track colour is the same as the primary notation print colour (default setting). Otherwise the secondary print track colour will be the same as that on the screen (assuming use of a colour printer).

[Lyrics](#)

[Background grey for edit mode.](#) Select to display a gray background when the lyrics are set in [edit mode](#). As it is sometimes difficult to always tell whether the lyrics are in display mode or edit mode, selecting this option clarifies just which mode is selected.

Midi Out Page

The MIDI Out Page allows configuration of sound card for playback.

Output device combo box Select an output device available on sound card.

Test button Tests the selected output device for sound output

Device Capabilities

Technology Type of the MIDI output device.

Number of Voices Voices supported by an internal synthesizer device. *

Number of simultaneous notes Number of notes that can be played simultaneously by an internal synthesizer device.*

Features Other features.

*If device selected is a port, field has no meaning and will be set to 0.

Note: If there are no MIDI output devices the text string "No MIDI output devices detected." is displayed

Process Repeat Bars Select to take account of repeat bar markings and sections on playback and export of MIDI files.

[There are some instances, particularly with MIDI file export where it is not

desired to take account of repeat bars and sections. Default setting is ON]

Guitar Tab Page

The Guitar Tab Page allows set up of relation between notation and the display of guitar tablature.

Tab Entry

Auto	Select so that on entering notation, tab is automatically entered in the appropriate position in the Tab staff below the notation staff. (Otherwise will be set for manual tablature entry .) Note 1
Fret median edit box and up/down buttons	The fret median is used to locate the note in the appropriate section of the fretboard - e.g. If set to 5 will select fret range 3 to 7 (assuming note not at high or low end).
Standard	Select so that on entering notation the appropriate fret position for automatic Tab entry treats notation entered as an octave higher. Note: Guitar music notation is virtually always written an octave higher than it sounds.

MIDI

Import / Export

Guitar music notation is commonly written an octave higher than it sounds. By selecting raise octave; on importing a MIDI track that is marked as guitar (Program Nos. 25 - 32) then the notes imported into the score will be an octave above. (Note: This option is linked to the 'Guitar - raise octave' in the [MIDI Import Criteria Dialog](#) - so selecting this will also ensure that on exporting a score to a MIDI file where a staff is marked as guitar then the notes exported will be an octave lower.)

Note 1: If you drag a note out of range for standard guitar / bass tuning. Then it becomes fairly straightforward that this is beyond bounds, in that you keep dragging the note either down and reaches bottom string "0" limit or up and reaches top string "24" limit. On selecting Pull Right Pop up Property Summary menu for a note that is out of bounds, The Property Summary Dialog displays a warning message text is shown in red "Warning: This note is out of bounds for standard guitar / bass guitar tuning."

Misc. Page

The Miscellaneous Page allows set up of Backup and version update checking.

Backup

Timed Document Backup every ... minutes Saves score/document backup copy to a temporary file every set period* of minutes, if the document has been modified. (This feature is useful should there be for example a power supply failure. The fact that there is a temporary backup therefore limits the amount of work that may be lost.) On normal closesure of the document the temporary backup file is deleted.
* 3 to 120 minutes

Original document backup On saving a document, the version of the document prior to saving is copied. This backup/previous version copy has the file extension *.avrell!

Updates

Check for updates every ... days Select to automatically check every set period* of days for any updates to the current installed version.
* 7 to 60 days.

Check Now Select this button to immediately check whether an update is available.
Will report back with MessageBox:
Update available and version number, or
No update available to current version, or

Unable to contact website for information.

Notes on Updates:

1. This is a simple check and after notification of any update, you will have to download the new version of the program, and exit your existing program version and install the new version over the existing program version.
2. For the evaluation version of this program the web check update is disabled. It is assumed that the current version is installed. (However if in doubt check www.giltrex.com)
3. By default this option is switched off. If switched on and it finds an update then a Message Box will be displayed. If you choose not to download and install the update, fine; you will not be notified of the update for another set period of days (assuming that the "Check for updates" box is selected).
4. If you have a firewall (recommended), then on Avrella checking for updates for the first time, you will be alerted that the application is trying to access the Internet. For example with ZoneAlarm a message "Avrella is trying to access <http://www.giltrex.com>" or similar will be shown. For this example (ZoneAlarm) click "Allow" to proceed and select "Remember this setting" checkbox (if you do not want to be bothered by the ZoneAlarm alert for Avrella again).

Option to set up log file - use for support purposes

For support purposes there is an option to set up a log file to record data whilst the program is running.

To display the Log controls

- * Hold down Ctrl and Right Double click with the mouse.
- * Log Controls Dialog - with "Show Log controls" text.
- * Select OK to display the log controls.

Note: The log file is opened on program start up, so on selecting the log checkbox, you will

have to exit and restart the program to start recording data to the log file.

To hide the Log controls:

- * Hold down Ctrl and Right Double click with the mouse.
- * Log Controls Dialog - with "Hide Log controls" text.
- * Select OK to hide the log controls.

Log

Log Select to keep a session log. If you require support, then this file may be of use in tracking down an issue..

Purge The session files are automatically purged down to 20 files every so often so not to exceed 80 files.

Select this button to manually carry out this action.

The session files are stored in users Documents directory

(File name: yyyyymmdd_hhmmss_AvrLog.txt)

Tip of the Day Dialog

Displays Tip of the day. A sequential series of tips on how to use the application.

Show Tips on
startup

Shows a new tip every time you start Avrella

Beginner Tips

Specify the level of tips to be shown Set - Beginner, Not set - Advanced

Go to Help

Enabled where appropriate so that you may launch Help to display further information.

Next Tip

Displays the next Tip of the Day

Trill / Accidental Dialog

The Trill Style / Accidental dialog allows the selection of the type of the appropriate [accidental](#) mark on to be inserted into the score.

Control		Dialog
()		Puts the accidental in parentheses(brackets)
Include		Include accidental marking with the Trill
Display above		Display accidental above the trill
{The file 'C:\Data\hg\AIT\Libraries\...\Dev\Avrella\res\dlgmdshp.bmp' could not be found.}	Select the double sharp accidental	Both
{The file 'C:\Data\hg\AIT\Libraries\...\Dev\Avrella\res\dlgmshp.bmp' could not be found.}	Select the sharp accidental	Both
{The file 'C:\Data\hg\AIT\Libraries\...\Dev\Avrella\res\dlgmnat.bmp' could not be found.}	Select the natural accidental	Both
{The file 'C:\Data\hg\AIT\Libraries\...\Dev\Avrella\res\dlgmflat.bmp' could not be found.}	Select the flat accidental	Both
{The file 'C:\Data\hg\AIT\Libraries\...\Dev\Avrella\res\dlgmflat.bmp' could not be found.}	Select the double flat accidental	Both

could not be found.}

OK. and **Cancel push buttons**

Grace Note Dialog

The Grace Note dialog allows the selection of the type of [grace note](#) indication to be inserted into the score.

Accidental

()	Puts the accidental in parentheses (brackets).
{The file 'C:\Data\hg\AIT\Libraries\...\Dev\Avrella\res\dlgmdshp.bmp' could not be found.}	Select the double sharp accidental
{The file 'C:\Data\hg\AIT\Libraries\...\Dev\Avrella\res\dlgmshp.bmp' could not be found.}	Select the sharp accidental
{The file 'C:\Data\hg\AIT\Libraries\...\Dev\Avrella\res\dlgmnat.bmp' could not be found.}	Select the natural accidental
{The file 'C:\Data\hg\AIT\Libraries\...\Dev\Avrella\res\dlgmflat.bmp' could not be found.}	Select the flat accidental
{The file 'C:\Data\hg\AIT\Libraries\...\Dev\Avrella\res\dlgmflat.bmp' could not be found.}	Select the double flat accidental
none	No accidental to be displayed alongside grace note

Time Interval

Quarter **through to** sixty fourth **radio buttons**

Sets the appropriate note value for the **grace note**

Tail

Up checkbox Sets the appropriate **grace note** tail up.

Down checkbox Sets the appropriate **grace note** tail down.

Y Offset

spin control Sets the centre offset for the grace note from the associate note. (Y offset range - 10 to 10 in units of a half **staffline space units**.)

Slur checkbox Draws a slur linking the grace note with the associate (main) note.

Bar checkbox Draws bar through grace note.
(The accurate name for a grace note with a bar through it: acciaccatura and for a grace note without a bar through it: appoggiatura.)

Trail checkbox Displays the grace note after the associate (main) note.

OK. and **Cancel pushbuttons**

Chord Title Dialog

The Chord Title dialog allows the entry/modification of the title for a chord diagram.

Edit Box

Enter/modify chord title.

Font Button

Select this button to set up the font settings for the chord title. On selecting this button a [Font dialog box](#) is displayed.

OK. and **Cancel pushbuttons**

Midi velocity (volume)

Midi Velocity is interpreted as corresponding to volume. The range that may be set is from 0 through to 127, where 0 is silent, 64 is *mezzo piano* (*mp*) and 127 *fortississimo* (*fff*).

Staff Type Dialog

The Staff Type defines the basic staff type to be used at the selected position in the system in the score.

Staff Type

Standard Regular staff type consisting of five lines with four spaces between them.

Tab(Guitar) Standard staff type for six string guitar tab consisting of six lines with five spaces between them.

Tab(Bass) Standard staff type for four string bass guitar tab consisting of four lines with three spaces between them.

OK. and **Cancel pushbuttons**

Instrument Details dialog

The Instrument Details allows set up of staff name, channel, instrument etc. for the staff selected.

Staff Name

Enter the text description to be displayed to the left of the staff.

Note: If you are displaying the staff title past the first system and wish to set up a shortened version (for subsequent systems) you may do this by use of ^n. For example entering a title "Guitar^nGtr." - will display "Guitar" for the first system and "Gtr." for subsequent systems.

Channel

Enter the channel no. 1 - 16 to be associated with this staff.

Device

Selection of either General MIDI - thus will display the standard 1 - 128 instrument types in Instrument / Voice or alternatively you may select a generic 1 -> 128 - thus display raw 1 -> 128 nos. in Instrument / Voice combo box.

Instrument / Voice

Select from 128 instrument types (Device: General MIDI selected) or the raw 1 -> 128 nos. (Device: Generic 1->128)

Mute

Select so that the staff will not be played back when selecting [Tools -> Play](#). (Typically this is selected when the staff is for a voice.)

Centre on bracket

Enabled only if Bracket with lower checkbox selected in Music Sheet Framework Dialog. Selecting will centre the title text in the centre of the bracket joining this (upper) staff with the lower staff.

Link to staff below

Sets / clears link between selected staff and staff below. This setting will take effect for the whole score.

E.g. Typical useage might be in a 4 staff score with the 1st staff for voice and subsequent staffs for instruments. So as not to clutter the lyrics between 1st and 2nd staff, the link to the staff below for staff 1 would be cleared and the links for staff 2 and staff 3 to their respective staff would be set.

(Note - these settings may be overridden for individual measures by use of [Format -> Current Measure -> Layout Tab](#). LH / RH staff links setting.)

Font Button

Select this button to set up the font settings for the appropriate details. When the cursor is in the composition title edit boxes, the button will display Font Title - indicating that selecting the font button will determine the font that is used just for the Composition Title. On selecting this button a [Font dialog box](#) is displayed

Midi Volume Button

Select this button to set the default Midi Volume for note entry for the selected staff. On selecting this button a [Default Midi Volume for Staff Dialog](#) is displayed. (The default Midi volume value set is displayed on the button.)

OK. and **Cancel pushbuttons**

Clef Tab

Allows set up of clef type

Namely Treble, Bass, Alto or Tenor

Clef Type

Treble, Bass, Alto and Tenor radio buttons

Select appropriate button for required clef.

8va checkbox

If a treble or bass clef is selected, then an 8va symbol may be attached to the clef to indicate that the notes displayed are an octave above or below, dependant on whether the '8' is above or below the clef symbol. This option is only for treble and bass clefs.

{The file

'C:\Data\hg\AIT\Libraries\...\Dev\Avrella\res\dlguparrow.bmp' could not be found.} and {The file

'C:\Data\hg\AIT\Libraries\...\Dev\Avrella\res\dlgdownarrow.bmp' could not be found.} radio buttons

{The file

'C:\Data\hg\AIT\Libraries\...\Dev\Avrella\res\dlguparrow.bmp' could not be found.} sets treble or bass clef type to display an 8 above the symbol - indicating an octave above.

{The file

'C:\Data\hg\AIT\Libraries\...\Dev\Avrella\res\dlgdownarrow.bmp' could not be found.} sets treble or bass clef type to display an 8 below the symbol - indicating an octave below.

End Line marking

It is common practice at the end of compositions, where the composition is to be repeated, for end section bar(s) to be marked within lines with a number to indicate on which play through the bars are to be played.

Example:

In the example above

First play through. The piece is played through from bar 1. On reaching bar 10, the 2 section bar as indicated by the end line bracket marked 1,2. (i.e. 1) is played, before starting play again from bar 1.

Second play through. The piece is played through from bar 1. On reaching bar 10, the 2 section bar as indicated by the end line bracket marked 1,2. (i.e. 2) is played, before starting play again from bar 1.

Third and final play through. The piece is played through from bar 1. On reaching bar 10, the 2 section bar as indicated by the end line bracket marked 3. is played to conclude the piece.

Scale

A scale is a progression of single notes upwards or downwards in steps to form a series within an octave. Ref.: [Intervals](#) for the common C Major scale. A scale is used as the basis of a composition. In Western music the most commonly used scales are the major and minor scales, although throughout the world the number of scales in use is incalculable. Some instruments are tuned to a scale that cannot be represented in orthodox notation - e.g. Scottish Bagpipe.

Some commonly used scales:

Scale

Major (C) C T D T E S F T G T A T B S C

Minor (A) A T B S C T D T E S F T G T A

Harmonic Minor (A) A T B S C T D T E S F 1.5 T G# S A

Pentatonic C T D 1.5 T F T G T A 1.5 T C

T = tone, S = semitone

Standard Toolbar

ClickTo

[Open a new](#) document.

[Open an existing](#) document. Avrella displays the Open dialog box, in which you can locate and open the desired file.

[Save](#) the active document or template with its current name. If you have not named the document, Avrella displays the Save As dialog box.

[Saves all](#) open documents with current name. If you have not named the document, Avrella displays the Save As dialog box.

[Remove](#) selected data from the document and stores it in the data buffer.

[Copy](#) the selection to the data buffer.

[Insert](#) the contents of the data buffer at the insertion point.

[Change scale](#) of display.

[Print](#) the active document.

[Print preview](#).

[Lyric edit](#) mode

[Standard input entry](#)

[Context sensitive help](#) - On running Avrella by clicking on this button and selecting a menu item or toolbar button the appropriate help section will appear.

Notes Toolbar

ClickTo

Select Whole (Semibreve) note entry mode.

Select Half (Minim) note entry mode.

Select Quarter (Crochet) note entry mode.

Select Eighth (Quaver) note entry mode.

Select Sixteenth (Semiquaver) note entry mode.

Select Thirty-second (Demisemiquaver) note entry mode.

Select Sixty-fourth (Hemidemisemiquaver) note entry mode.

Attach flat symbol to note for note entry.

Attach natural symbol to note for note entry.

Attach sharp symbol to note for note entry.

Select triplet entry mode.

Select triplet ratio dialog.

Attach one dot to note for note entry.

Attach two dots to note for note entry.

Navigation Toolbar

Click To

Go to the first page in the score.

Go to the previous page in the score.

Go to the next record page in the score.

Go to the last record page in the score.

Go to a measure in the score.

Go to a page in the score.

Format and Presentation Toolbar

ClickTo

Select Tabbed Dialog for Current(Active) Measure.

Reset Current(Active) measure to standard spacing.

Select the Music Sheet Framework dialog box.

Select the Document Setup tabbed dialog box.

Select the Details tabbed dialog box.

Playback Toolbar

ClickTo

Currently record facility from a Midi keyboard is not supported. However this is to be implemented in a future 1.xx release of Avrella. Although by use of a Midi sequencer you may record a Midi file and then import the generated A recommended Midi sequencer is Jazz++ freely available from www.jazzware.com

[Play](#) from selected measure.

[Pause](#) playback.

[Stop](#) playback.

Tablature Toolbar

Click To

Reduce fret median value for Tab entry.

0 -> 22 Fret median value for Tab entry.

Increase fret median value for Tab entry.

Custom (Key Signature) Tab

Allows set up of a custom key signature.

Select appropriate sharp or flat buttons for the required custom key signature.

Display natural

Display natural checkbox is typically set if wishing to explicitly state that prior sharps / flats are cancelled. A typical useage would be where for example the initially key was D Major (C# and F#) and subsequently on in the score, the key was being changed to C Major (no sharps or flats). In this instance it would be best to select Custom and set the Display Natural check boxes for C and F.

General (Time Signature) Tab

Beats per bar spin button*

Sets the beats per bar for time signature (upper number).

Beat value radio button*

Sets the beat value for time signature (lower number).

Type	Sets selected composition title, composer or copyright to the justification as defined.
Standard	Allows entry of standard time signature.
Common Time	Sets the time signature to Common time .
Alla Breve	Sets the time signature to Alla Breve .

* Note the 'Beats per bar' and 'Beat Value' labels are used within the context of [simple time](#) signatures as opposed to [compound time](#) signatures.

Style (Time Signature) Tab

Font Button

Select this button to set up the font settings for the time signature. On selecting this button a [Font dialog box](#) is displayed

Notating two voices on the same staff

There may be instances for which it is desirable to notate two separate 'voices' on the same staff. In the example below the primary voice / notation is set up as black (default) and the secondary voice / notation colour is set up as cyan (default) (Ref.: [Tools->Options->Display](#).) Having entered the first / primary notation in the usual way, to enter the secondary notation hold down the Ctrl + Alt keys and select 'E' (as opposed to the shortcut key command Ctrl + E for the primary notation).

Manually entering Tablature

If you are manually entering tablature (i.e. you have not set Auto so that the tablature is automatically associated with the musical notation on the staff above - ref: [Guitar Tab. Page](#))

Then simply put the cursor on the "tab string" that you want to place a number on and press the appropriate number.

In the example above

Place the cursor on the 2nd string and press 8

Move along and place the cursor on the top string and press 8.

Move along and place the cursor on the 2nd string. To enter a double digit value greater than 9, hold the shift key down and press the first figure. Release the shift key and then press the second figure. Thus for this example - hold the shift key down - press 1. Release the shift key and press 1.

Move along and place the cursor on the 2nd string and press 8.

MIDI Import Criteria Dialog

This dialog allows how determine handling of MIDI import.

At the top of the dialog - displays MIDI the file name and format type

Parse Means by which Avrella interprets the Midi file and translates it into notation.

Auto Default selection. (Because the majority of midi files are recordings of actual performances by humans and not machines, the data input does not consist of perfect 1/4s, 1/8ths, 1/16ths etc. Consequently the Auto selection is recommended, which will carry out some additional processing to take this into account.)

Note resolution

Quarter - 32nd Rounds the note to the nearest value selected.

Options

Guitar - raise octave Guitar music notation is commonly written an octave higher than it sounds. By selecting raise octave; on importing a MIDI track that is marked as guitar (Program Nos. 25 - 32) then the notes imported into the score will be an octave above. (Note: This option is linked to the 'Guitar - raise octave' in the [Guitar Page](#) (Tools -> Options -> Guitar Page) - so selecting this will also ensure that on exporting a score to a MIDI file where a staff is marked as guitar then the notes exported will be an octave lower.)

Split Keyboard Select to split a keyboard track into two separate staves if the [tonal range](#) of the track requires it (i.e. typically if notes on the track above and below

tracks -> 2 middle C)

staves

(Note this option is typically used when importing a MIDI file that has been created straight off a keyboard or via some application in which the keyboard track is written as one track. If the MIDI file was created using Avrella and the keyboard is assigned two staff - treble and bass, then it is effectively already split and thus this option will not be required.)

OK. and **Cancel push buttons**

Volume Table

Italian

forte (**f**)

fortissimo (**ff**)

fortississimo (**fff**)

mezzo forte (**mf**)

mezzo piano (**mp**)

piano (**p**)

pianissimo (**pp**)

pianississimo (**ppp**)

English

Loud

very loud

louder than fortissimo

medium loud

medium soft

soft

very soft

softer than pianissimo

Book Antiqua Bold Italic seems to be the best common Windows font for indicating the symbols in brackets. Additional **f**s indicates levels louder - e.g. **fff** Additional **p**s indicates levels softer.

Context Help

Use the Context Help command to obtain help on some portion of Avrella. When you choose the Toolbar's Context Help button, the mouse pointer will change to an arrow and question mark. Then click somewhere in the Avrella window, such as another Toolbar button. The Help topic will be shown for the item you clicked.

Shortcut

Keys: SHIFT+F1